



BarlowTyrie

Est 1920



The Collections 2023

Haven Three-seat Settee with Natural cushions,
Haven Conversation Table 100



BarlowTyrie

Est 1920



BarlowTyrie

Est 1920



Founded in 1920, Barlow Tyrie is the world's oldest manufacturer of teak wood leisure furniture. In recent years we have added furniture in stainless steel and powder coated aluminium to our range.

We combine form and function with manufacturing experience and expertise to create pleasing designs with good ergonomic performance and so make outdoor living as stylish as it is comfortable.

An international reputation based on stylish yet practical designs, traditional craftsmanship and excellent customer service has made our brand synonymous with quality.



Quality & Excellence

Barlow Tyrie is renowned worldwide for luxury outdoor furniture that strikes the highest note in quality and style.

We use the highest grade of FLEGT-licensed teak wood and hardware made from solid brass or where strength dictates, marine grade stainless steel.

We make each of our Collections with an uncompromising pursuit of quality, whether it is the materials we use or the craftsmanship we employ - this is our ethos.



Elite Craftsmanship

Traditional values; quality, craftsmanship, service and care. Over many years we have honed our skills to create beautiful furniture, built to stand the test of time.

Our designers have combined pleasing aesthetics with ergonomic performance to create furniture that opens up your life outdoors to a world of stylish possibilities. Through our commitment to produce the finest outdoor furniture, we remain at the forefront of this rapidly changing industry and continue to demonstrate the best in British design and manufacturing expertise.





Innovative designs

Innovation and development combined with our manufacturing knowledge and experience results in products that are constructed to the highest standard.

We only use the finest materials available, which are tested and approved to the appropriate British and Industry Standards for safety and strength. Our range of furniture includes many pieces that have won international design awards and are frequently copied classics.

We have diversified in recent years to develop collections in a variety of quality materials, which we combine with both traditional and innovative construction methods.

It is reassuring to know that our designers and craftsmen are creating 'modern-classics' with the quality, style and comfort that has become the hallmark of our ethos.

Customer Service and Care

Our exceptional customer service offers after-sales support and encourages an ongoing relationship with our customers. Throughout the life of our products, you can be confident that our customer service will respond to any query you might have.



A century of excellence

Since starting from humble beginnings as a specialist manufacturer of teakwood outdoor furniture in East London over 100 years ago, we have progressed and are now known and respected worldwide as producing luxury outdoor furniture that strikes the highest note in quality and style. This is our story...



1920

Victor Tyrie and Frederick Barlow, together with a few others, started their business in London, initially in Walthamstow but then moving to a stable that was no longer in use behind a terrace of Victorian houses in nearby Leytonstone.



1949

After WWII we resumed production, initially using home-grown timber to produce rustic outdoor furniture but later reverting to our traditional use of premium teak, supplying the fashionable and exclusive London stores of the time, including Harrods, Maples, and Heals.



1970

After nearly 50 years, we moved from Leytonstone to the old market town of Braintree in Essex. This move benefited from a scheme run by The Greater London Council in several designated expanding towns. The scheme provided housing for residents of London that were prepared to move away from areas being redeveloped and included some of our employees.



1986

We opened an office and warehouse in the USA to serve our increasingly important market in North America.



1992

In response to a policy of the Indonesian government to stop the export of teak that we had sourced there since the early 1980s; we acquired a factory on the island of Java, which we expanded to approximately 300,000 sq.ft. and today employ around 300 local people.



2020

Victor Tyrie's son, Peter and grandsons, Mark and James manage the company, making Barlow Tyrie a truly family business with a continuing legacy of designing and manufacturing some of the highest quality outdoor furniture money can buy.

Secret Bay, Caribbean

Inspiration

Background: Award-winning Secret Bay is a six-star, rain forest resort experience, featuring secluded cliff-top residential style villas, private plunge pools, dedicated attendants, personal chefs, and secret beaches.

Secret Bay came to us with a need for premium quality, durable furniture for use inside and outside each of their outstanding villas.

Solution: We recommended Horizon and Haven loungers, Titan dining tables and chairs, Monaco dining chairs and Linear tables.

secretbay.dm

Instagram & Facebook: @secretbay





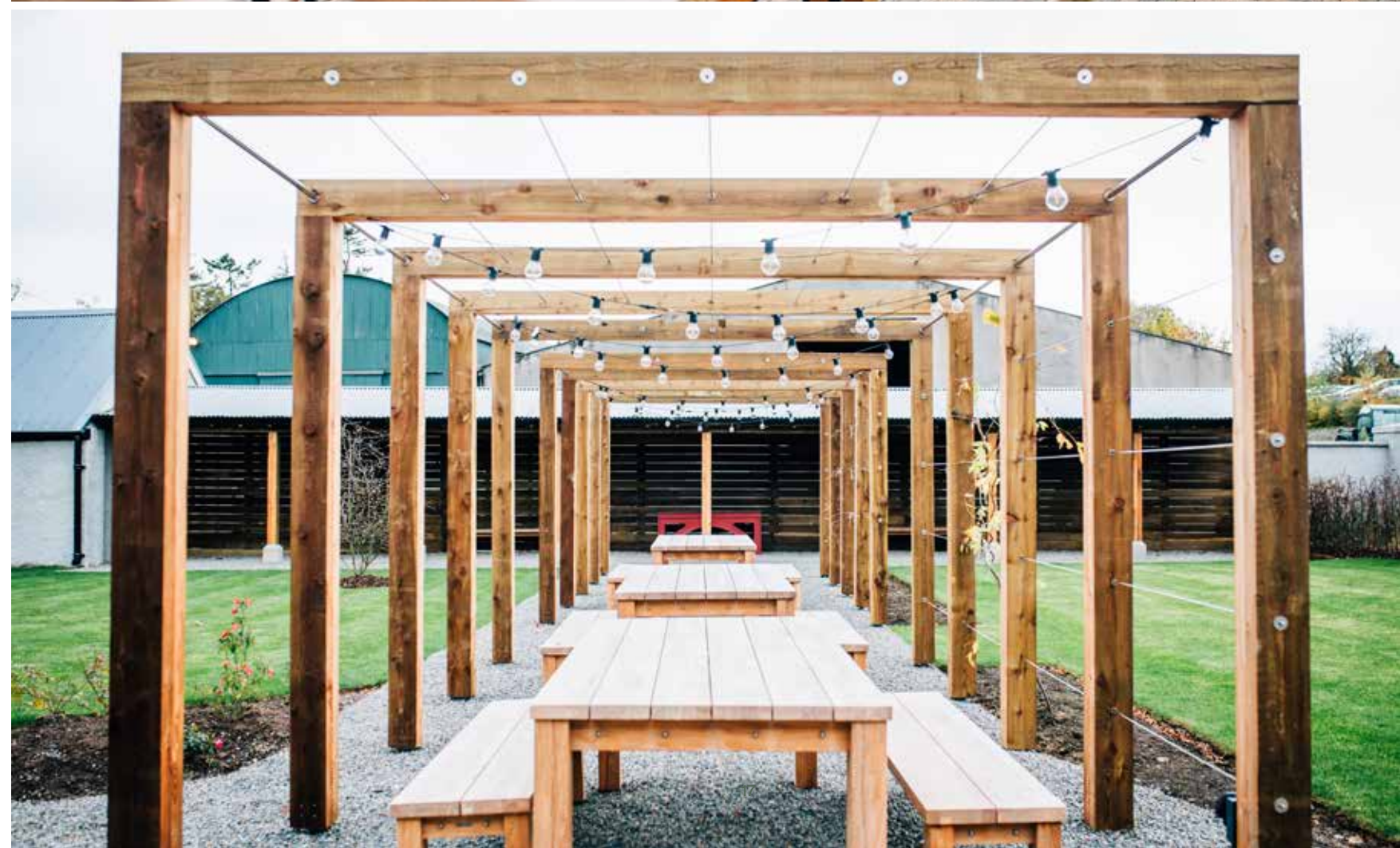
Montalto Estate, Ballynahinch, UK

Inspiration

Background: Montalto Estate, nestled in the heart of the picturesque County Down countryside, is a privately-owned demesne which dates back to the early 1600s and receives over 100,000 visitors per year. Its stunning gardens, which allow visitors to ‘reconnect with nature’ have been shortlisted for UK Historic House Garden of the Year, and hold a 5-star rating from Tourism Northern Ireland. The Café at Montalto, which opened in September 2018, is a stylish eatery which specialises in exquisite seasonal menus and obtains many of its herbs and vegetables from the estate grounds.

Solution: The Montalto Estate was inspired by RHS Wisley’s use of Barlow Tyrie’s Titan collection in its 2018 café launch. Montalto needed seating that reflected the rustic charms of this Northern Irish country estate and its elegant gardens. Sets of Titan tables, benches, and seats were delivered to the outdoor space allowing seating for up to 56 patrons at any one time. Montalto staff can easily and simply buff the wood back to its original finish should it get stained by beverages in such a high footfall area. This function, coupled with the highest quality, was critical to the estate, so much so that ‘The Shop at Montalto’ also offered a small selection from the Titan collection for retail sale. “We don’t see ourselves as your standard tourist attraction,” says Marketing Manager Tracy O’Toole. “Our shop’s focus is on premium products that are in keeping with the Montalto brand that we know our customers will love.”

montaltoestate.com
 Instagram & Facebook: @montaltoestate



Suffolk Cottage Garden, UK

Inspiration

Background: Overlooking a paddock under big East Anglian skies, the garden of a late 18th-century mill barn conversion in a small rural village has been cleverly designed to blend contemporary and traditional seamlessly.

Understanding how our environment influences our well-being, the owners wanted to spend more time eating and relaxing in their outdoor space, having lived and worked in Australia some years ago. Collaborating with garden designer Chris Deakin, the owners wanted separate yet flowing zones for their garden. This has been achieved, retaining aspects of an English cottage garden through layout and planting, combining a modern feel to the cooking, dining and seating area.

Solution: The dining area has a weather-controlled roof and sides, which can be enclosed with a screen and gliding glass doors. The owners can pick their produce just before cooking from the adjacent cube-shaped box hedge framed fruit and vegetable planting area.

To ensure all diners feel equally comfortable, they are seated on Equinox carver chairs with 316 marine grade stainless steel frames, Graphite arms and Platinum Textilene® slings. The Equinox 3m dining table with Ash Ceramic top seats eight generously.

The seating area uses two large Mercury Deep Seating configurations with seat and back cushions in waterproof Sunbrella® Rain Lead Chiné, each seating four, separated by a firepit table. Complementing the right angles used throughout the landscaping, the Mercury Deep Seating maintains the same box shape whilst offering a slight softening with the curved backs and arms.

The 316 marine grade stainless steel frames selected on the Equinox Dining furniture and Mercury Deep Seating subtly link the two seating areas.



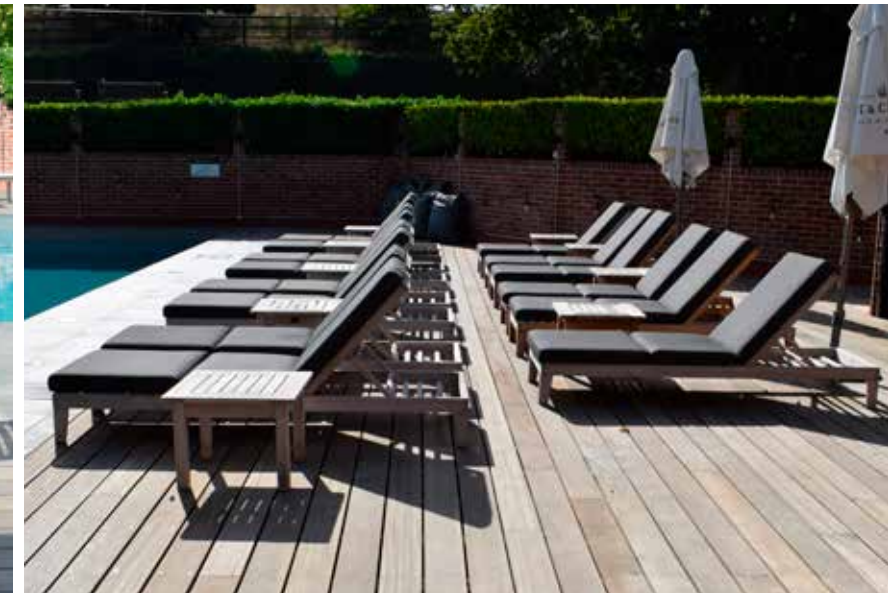
Talbooth Hotel & Spa, UK

Inspiration

Background: With 70 years of history, the family-owned and run Milsom Hotel & Restaurant group aims to be the first choice for eating, drinking and staying in the Essex and Suffolk area. To ensure an optimum experience for its customers, its ethos is to ensure consistent quality and to keep looking forward. Talbooth House & Spa has recently been rebranded and developed to be a spa-led facility, aiming to be the 'number one place to step back, relax and indulge in Constable Country'. The main hotel building dates from the mid-nineteenth century and is a classic Victorian design, with each bedroom named after an English poet. The modern spa and pool area present an oasis of tranquillity, with treatments tailored and delivered in an extremely calm, relaxed and comfortable environment.

Solution: The decked pool area is flanked on two sides by classic teak Capri Loungers – Base, which are designed to be static. Each lounge has a full-length cushion in water-repellent Charcoal Sunbrella® fabric and each pair of loungers share a Colchester Low Table 54. The informal poolside dining area is furnished with Equinox Chairs and Tables 100, made using 316 marine-grade stainless steel. The tables have teak tops, and the chairs have shaped backs and seats in teak. The teak brings warmth and softness to the contemporary stainless steel with horizontal lines in the loungers and dining furniture that echo the horizontal styling that is evident in the decking and pool house frontage.

Tucked neatly into the pool house is a snug with a wood-burning fire and blankets. Equinox Occasional Armchairs and a Three-seater Settee with 316 marine-grade stainless steel, teak arms and Charcoal Sunbrella® cushions surround an Equinox Low Table 100, providing a modern, cosy seating area.



Private Residence, W. Sussex, UK

Inspiration

Background: Continuous views are essential to the owner, which is no surprise when one takes in the breathtaking 180-degree vista of England's south from the garden. In addition, the client wanted to enjoy the synergy of the landscape against both the old and new parts of the house where the dining area is built.

Solution: Quite simple really - the client needed the dining table to be big! The material of the dining suite needed to be sympathetic to both the early 20th century stonework and the new glass and timber parts of the building. Barlow Tyrie's Horizon and Apex collections met this need. The dark translucent seat sling complements the anthracite pillars of the new part of the building, while the teak table and chair frames reflect the design of the timber soffits. Join these aspects with a gently curved design and the choice was a simple one.



Private Residence, New Jersey, USA

Inspiration

Background: Creating a modern and welcoming open space for relaxing, bathing and dining during the spring and summer months is never easy. The homeowner contacted The Wickery, a USA stockist in November 2019 during the build phase of the project to help recommend outdoor furniture. The main objective? No throw cushions!

Solution: A modern look was the key objective. Aluminium frames with teak arms were recommended as a way to soften the sometimes cold and 'industrial' feel of all-metal frames. Barlow Tyrie's Aura 10-seater dining set, along with four Aura high dining chairs for the bar met this need and budget. The colour of the chair sling matched the previously purchased lounge suite.

'Having sling-backed chairs helped remove the need for fluffy, dated looking cushions,' said The Wickery MD, Panatda. 'The client wanted to ensure that the teak on the chairs would not crack. Barlow Tyrie's 100-year heritage, service level and high-quality manufacturing processes helped waylay any fears and gave the client an informed and confident choice.'

thewickery.com

Facebook & Instagram: @thewickery





Stainless steel

3 Collections 7 international design awards

Barlow Tyrie at Concrete House

Layout Deep Seating system with Arctic White Frames and Carbon Beige cushions. Layout 160 Low Table and Layout 80 Bridging Table, with Arctic White frames and Teak tops and Layout Ottoman.

Equinox Dining

Stainless Steel

Equinox Dining

The Equinox range of dining tables and chairs has 316 marine-grade stainless steel frames with extensive combinations of Textilene® slings and teak, with an extending table top additionally available in Italian high-fired ceramic.



Sling options
More information on page 188



Charcoal ^ Titanium ^ Platinum ^ Pearl ^ Seagull* Carbon* ^ Non Powder Coated only * Powder Coated only

Frame options ■ Graphite .01 ■ Arctic White .02 ■ Sling options ● Charcoal .500 ● Titanium .502 ● Platinum .504 ● Pearl .505 ● Seagull .512 ● Carbon .513



Equinox Chair

1EQ.+ W 20 H 33 D 24 ins
Seat height 18ins
Weight 18lbs
Stackable

Additional products
400907 Cover for 4 chairs stacked
400908 Cover for 2 chairs stacked



Equinox Chair - Powder Coated

1EQP.+ W 20 H 33 D 24 ins
Seat height 18ins
Weight 18lbs
Stackable

Additional products
400907 Cover for 4 chairs stacked
400908 Cover for 2 chairs stacked



Equinox Carver - Graphite Arm

1EQA.01.+ W 24 H 33 D 24 ins
Seat height 17ins Arm height 25ins
Weight 20lbs
Stackable

Additional products
400905 Cover for 4 chairs stacked
400906 Cover for 2 chairs stacked



Equinox Carver - Arctic White Arm

1EQA.02.505 W 24 H 33 D 24 ins
Seat height 17ins Arm height 25ins
Weight 20lbs
Stackable

Additional products
400905 Cover for 4 chairs stacked
400906 Cover for 2 chairs stacked



Equinox Carver - Powder Coated

1EQPA.+ W 24 H 33 D 24 ins
Seat height 17ins Arm height 25ins
Weight 20lbs
Stackable

Additional products
400905 Cover for 4 chairs stacked
400906 Cover for 2 chairs stacked



Equinox Carver - Teak Arm

1EQA.+ W 24 H 33 D 24 ins
Seat height 17ins Arm height 25ins
Weight 20lbs
Stackable

Additional products
400905 Cover for 4 chairs stacked
400906 Cover for 2 chairs stacked



Equinox features

- Premium 316 'marine grade' stainless steel frames
- Seating available with teak or Textilene® and Sunbrella® slings – strong, durable and mildew resistant
- Minimal maintenance – 4SSCG Stainless Steel Clean & Guard
- Stacking chairs and sun loungers
- Can be combined with the Mercury collection (see page 64)



Equinox Chair - Teak

1EQ.T W 20 H 33 D 24 ins
Seat height 17ins
Weight 18lbs
Stackable

Additional products

800005 Cushion
Water repellent Chair cushion
400907 Cover for 4 chairs stacked
400908 Cover for 2 chairs stacked



Equinox Carver - Teak

1EQA.T W 24 H 33 D 24 ins
Seat height 17ins Arm height 25ins
Weight 20lbs
Stackable

Additional products

800005 Cushion
Water repellent Chair cushion
400905 Cover for 4 chairs stacked
400906 Cover for 2 chairs stacked



Equinox Bench 135

1EQ13.T L 53 W 17 H 17 ins
Weight 35lbs
Assembly required



Equinox Bistro Table 70 Ø

2EQC07.T Ø 26 H 28 ins
Clearance 24ins
Weight 24lbs Seats 2
Assembly required

Additional products

400004 Cover for Equinox Bistro Table 70

Parasol hole 1 5/8ins for parasol 4NA28C only. Blanking caps and reducer rings are not available for this table.



Equinox Bistro Table 100 Ø

2EQC10.T Ø 40 H 28 ins
Clearance 26ins
Weight 40lbs Seats 4
Assembly required Parasol hole

Additional products

400751 Cover for 36–48 ins table and 4 chairs



Equinox Table 100

2EQ10.T L 38 W 39 H 29 ins
Clearance 26ins
Weight 55lbs Seats 4
Assembly required Parasol hole

Additional products

400751 Cover for 36–48 ins table and 4 chairs



Equinox Table 150

2EQ15.T L 59 W 39 H 29 ins
Clearance 26ins
Weight 66lbs Seats 6
Assembly required Parasol hole

Additional products

400765 Cover for 59ins table and 6 chairs



Equinox Table 220

2EQ22.T L 85 W 39 H 29 ins
Clearance 26ins
Weight 93lbs Seats 8 to 10
Assembly required Parasol hole

Additional products

400766 Cover for 79ins table and 6–8 chairs

Equinox Extending Table 230

2EQX23 L 59–90 W 39 H 29 ins
Clearance 26ins
Weight 101lbs Seats 6 to 8
Assembly required Parasol hole

Additional products

400765 Cover for 59ins table and 6 chairs





Equinox Extending Table 230 and Mercury Dining Armchairs with Platinum sling

Equinox Table 150 Ø

2EQC15S.T Ø 58 H 28 ins
 Clearance 26ins
 Weight 101lbs Seats 6
 Assembly required Parasol hole

Additional products

400753 Cover for table and 6 chairs
 400002 Equinox circular cover



Equinox Table 180 Ø

2EQC18S.T Ø 71 H 28 ins
 Clearance 26ins
 Weight 143lbs Seats 8
 Assembly required Parasol hole

Additional products

400754 Cover for table and 8 chairs
 400001 Equinox circular cover



Equinox Lazy Susan 70 Ø for 2EQC15S.T

2EQLS07 Ø 26ins
 Weight 13lbs
 Parasol hole



Equinox Lazy Susan 100 Ø for 2EQC18S.T

2EQLS10 Ø 40ins
 Weight 29lbs
 Parasol hole



Equinox Table 70 - Powder Coated

2EQP07.+ L 28 W 28 H 29 ins
Clearance 28ins
Weight 33lbs Seats 2
Assembly required

Additional products
400750 Cover for Pedestal Table 70 Square



Equinox Table 100 - Powder Coated

2EQP10.+ L 39 W 39 H 28 ins
Clearance 26ins
Weight 60lbs Seats 4
Assembly required

Additional products
400751 Cover for 36-48 ins table and 4 chairs



Equinox Table 150 - Powder Coated

2EQP15.+ L 59 W 39 H 28 ins
Clearance 26ins
Weight 71lbs Seats 4
Assembly required

Additional products
400765 Cover for 59in table and 6 chairs



Equinox Table 200 - Powder Coated

2EQP20.+ L 79 W 39 H 28 ins
Clearance 26ins
Weight 93lbs Seats 8
Assembly required

Additional products
400766 Cover for 79in table and 6-8 chairs



Equinox Extending Table 360 - Powder Coated

2EQPX36.+ L 94-142 W 44 H 29 ins
Clearance 26ins
Weight 276lbs Seats 10 to 14
Assembly required

Additional products
400775 Equinox cover (extended table)
400777 Equinox cover (closed table)



Equinox Extending Table 360

2EQX36.+ L 94-142 W 44 H 29 ins
Clearance 26ins
Weight 276lbs Seats 10 to 14
Assembly required

Additional products
400775 Equinox cover (extended table)
400777 Equinox cover (closed table)



Equinox Table 180 Ø - Powder Coated

2EQPC18.+ Ø 71 H 28 ins
Clearance 28ins
Weight 154lbs Seats 8
Assembly required Parasol hole

Additional products
400754 Cover for table and 8 chairs
400001 Equinox circular cover



Equinox 360 Extending Dining Table with Frost Ceramic top, Equinox Dining Chairs and Equinox Dining Armchairs with platinum sling



Frame options ■ Graphite .01 ■ Arctic White .02 ■ Ceramic options ● Frost .806 ● Dusk .808

Equinox High Dining Carver, Equinox High Dining Bistro Table 70 Ø and Equinox High Dining Chair. Both seats feature a Pearl sling

Equinox High Dining

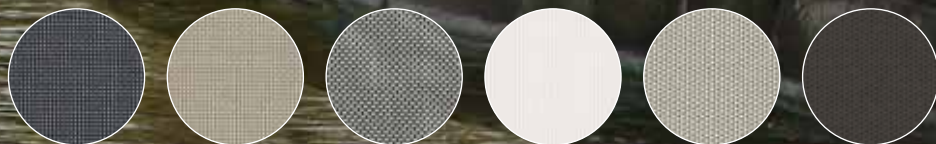
Stainless Steel

Equinox High Dining

The Equinox High and Counter Height Dining range has 316 marine-grade stainless steel frames, with options of Textilene® slings, teak and Italian high-fired ceramic.



Sling options
More information on page 188



Charcoal ^ Titanium ^ Platinum ^ Pearl ^ Seagull* Carbon* ^ Non Powder Coated only * Powder Coated only

Frame options ■ Graphite .01 ■ Arctic white .02 ■ Sling options ● Titanium .502 ● Charcoal .500 ● Platinum .504 ● Pearl .505 ● Seagull .512 ● Carbon .513



Equinox High Dining Chair
1EQH.+ W 19 H 42 D 20 ins
Seat height 29ins
Weight 18lbs
Stackable



Equinox High Dining Chair - Powder Coated
1EQPH.++ W 19 H 42 D 20 ins
Seat height 29ins
Weight 18lbs
Stackable



Equinox High Dining Chair - Teak
1EQH.T W 19 H 42 D 20 ins
Seat height 28ins
Weight 18lbs
Stackable



Equinox Counter Height Chair
1EQM+ W 19 H 38 D 20 ins
Seat height 25ins
Weight 17lbs
Stackable



Equinox Counter Height Chair
1EQPM++ W 19 H 38 D 20 ins
Seat height 25ins
Weight 17lbs
Stackable



Equinox Counter Height Chair in teak
1EQM.T++ W 19 H 38 D 20 ins
Seat height 25ins
Weight 17lbs
Stackable



Equinox High Dining Carver

1EQHC W 22 H 42 D 20 ins
Seat height 29ins Arm height 36ins
Weight 22lbs
Stackable



Equinox High Dining Carver

1EQPHC W 22 H 42 D 20 ins
Seat height 29ins Arm height 36ins
Weight 22lbs
Stackable



Equinox High Dining Carver, Teak

1EQHC.T W 22 H 42 D 20 ins
Seat height 28ins Arm height 36ins
Weight 22lbs
Stackable



Equinox Counter Height Carver

1EQMC W 22 H 38 D 20 ins
Seat height 25ins Arm height 32ins
Weight 20lbs
Stackable



Equinox Counter Height Carver

1EQPMC W 22 H 38 D 20 ins
Seat height 25ins Arm height 32ins
Weight 20lbs
Stackable



Equinox Counter Height Carver in Teak

1EQMC.T W 22 H 38 D 20 ins
Seat height 25ins Arm height 32ins
Weight 20lbs
Stackable



Equinox High Dining Stool with Teak Seat

1EQHS.T W 16 H 28 D 19 ins
Weight 18lbs



Equinox Counter Height Stool

1EQMS W 16 H 24 D 19 ins
Weight 15lbs
Stackable



**Equinox High Dining Bistro Table
70 Ø Circular with Teak top**

2EQCH07.T Ø 26 H 39 ins
Clearance 38ins
Weight 22lbs Seats 2
Assembly required Parasol hole



Equinox Dining Stool HD with teak seat



**Equinox High Dining Bistro Table
100 Ø Circular with Teak top**

2EQCH10.T Ø 40 H 39 ins
Clearance 38ins
Weight 44lbs Seats 4
Assembly required Parasol hole

Additional products

400752 Equinox High Dining cover



**Equinox High Dining Pedestal Table
70 Square**

2EQPH07 L 28 W 28 H 39 ins
Clearance 38ins
Weight 35lbs Seats 2
Assembly required



Equinox Counter Height Pedestal Table 70

2EQPM07 L 28 W 28 H 36 ins
Clearance 34ins
Weight 35lbs Seats 2
Assembly required



Frame options ■ Graphite .01 ■ Arctic White .02 ■ Ceramic options ● Frost .806 ● Dusk .808

Equinox Armchair, Equinox Ottoman, Equinox Two-seater Settee and Equinox Three-seater Settee (1EQD3.3705). All feature Charcoal cushions and slings

Equinox Occasional



Stainless Steel

Equinox Occasional

The Equinox Occasional range includes deep seating, low tables and loungers. All frames are 316 marine-grade stainless steel with teak arms and tops, which complement our extensive range of Equinox Dining, High Dining and Counter Height furniture.



Equinox Armchair

1EQDA.+ W 16 H 32 D 37 ins
Seat height 18ins Arm height 22ins
Weight 31lbs
800038 Equinox cushion

Additional products
400741 Equinox cover



Equinox Two-seater Settee

1EQD2.+ W 54 H 32 D 37 ins
Seat height 18ins Arm height 22ins
Weight 44lbs
800038 x2 Equinox cushion

Additional products
400742 Equinox cover



Equinox Three-seater Settee

1EQD3.+ W 80 H 32 D 37 ins
Seat height 18ins Arm height 22ins
Weight 60lbs
800038 x3 Equinox cushion

Additional products
400743 Equinox cover



Equinox Armchair

1EQPDA W 16 H 32 D 37 ins
Seat height 18ins Arm height 22ins
Weight 31lbs
800038 Equinox cushion

Additional products
400741 Equinox cover



Equinox Two-seater Settee

1EQPD2 W 54 H 32 D 37 ins
Seat height 18ins Arm height 22ins
Weight 44lbs
800038 x2 Equinox cushion

Additional products
400742 Equinox cover



Equinox Three-seater Settee

1EQPD3 W 80 H 32 D 37 ins
Seat height 18ins Arm height 22ins
Weight 60lbs
800038 x3 Equinox cushion

Additional products
400743 Equinox cover



Frame options ■ Graphite .01 ■ Arctic white .02



Equinox Ottoman

1EQDO.+ W 16 H 18 D 28 ins
Weight 22lbs
800040 Equinox cushion

Additional products

400130 Equinox cover



Equinox Ottoman

1EQPDO W 16 H 18 D 28 ins
Weight 22lbs
800040 Equinox cushion

Additional products

400130 Equinox cover



**Equinox Low Table
44 Square with Teak top**

2EQL04.T L 17 W 17 H 16 ins
Weight 20lbs
Assembly required



**Equinox Low Table
60 Square with Teak top**

2EQL06.T L 23 W 23 H 16 ins
Weight 24lbs
Assembly required



**Equinox Low Table 100
Square with Teak top**

2EQSC10.T L 38 W 39 H 19 ins
Weight 49lbs
Assembly required

Additional products

400782 Equinox cover



**Equinox Low Table 100
Rectangular with Teak top**

2EQL10.T L 40 W 23 H 16 ins
Weight 33lbs
Assembly required

Additional products

400783 Equinox cover



**Equinox Conversation Table
100 Ø Circular with Teak top**

2EQCC10.T Ø 40 H 19 ins
Weight 44lbs
Assembly required Parasol hole

Additional products

400781 Equinox cover



**Equinox Low Table
50 Square**

2EQPL05 L 20 W 20 H 16 ins
Weight 23lbs
Assembly required



**Equinox Low Table
100 Rectangular**

2EQPL10 L 39 W 20 H 16 ins
Weight 55lbs
Assembly required

Additional products

400783 Equinox cover



Frame options ■ Graphite .01 ■ Arctic white .02 ■ Ceramic options ● Frost .806 ● Dusk .808



Equinox Deep Seating Armchairs and Ottomans with Powder coated finish in Arctic White and Adriatic Blue cushions



Equinox Lounger with powder coated finish in Graphite with Charcoal Sling and Equinox Lounger Table 49 with Powder coated finish in Graphite and Dusk ceramic top



Equinox Lounger with Powder coated finish in Arctic White and Seagull sling

Frame options ■ Graphite .01 ■ Arctic White .02 ■ Sling options ● Charcoal .500 ● Titanium .502 ● Platinum .504 ● Pearl .505 ● Seagull .512 ● Carbon .513 ● Ceramic options ◆ Frost .806 ◆ Dusk .808



Equinox Lounger - Teak capping

1EQL.+ L 77 W 27 H 34.5 ins
Weight 51lbs
Stackable

Additional products
400733 Cover for Lounger
400731 Cover for two Loungers - Stacked



Equinox Lounger - Powder Coated

1EQPL.+ L 77 W 27 H 34.5 ins
Seat height 12ins
Weight 51lbs
Stackable

Additional products
400733 Cover for Lounger
400731 Cover for two Loungers - Stacked



Equinox Sunshade

1LSS.+ L 77 W 27 H 34.5 ins
Assembly required



Equinox Sunshade - Powder Coated

1LSSP.+ L 77 W 27 H 34.5 ins
Assembly required



Equinox Lounger Table 49 for 1EQL

2EQLT L 19 W 13.5 H 12 ins
Weight 15lbs
Assembly required



Equinox Lounger Table 49 for 1EQPL - Powder Coated

2EQPLT.+ L 19 W 13.5 H 12 ins
Weight 15lbs
Assembly required



Layout Deep Seating

Layout Single Seat and double seat - one arm with Arctic White frame and Carbon Beige cushions, Layout Side Table with Arctic White Frame and Teak top and Luna Lantern

Sunbrella® Rain® water repellent fabric
Please refer to fold out for full colour range



Carbon Beige Chalk

Stainless Steel

Layout Deep Seating

The Layout collection of modular deep seating offers many possibilities. Upholstered backs and arms are separate units that can fit on any side of the seating units to create sofas, corner sectionals, loungers, chairs, ottomans and many asymmetric configurations. Designed by award-winning international designers Andrew Jones and Nathalie de Leval.

The US only offers the Layout collection in the two fabrics that are shown on the opposite page. For cushion codes please contact your local retailer.



Layout Single Seat - Low Arms

1LYMAC.+ W 38 H 28 D 35 ins
Seat height 17ins Arm height 24ins
Weight 76lbs
Assembly required

Additional products
400123 Layout Deep Seating cover



Layout Single Seat - One Low Arm

1LYMACE.+ W 38 H 28 D 35 ins
Seat height 17ins Arm height 24ins
Weight 76lbs
Assembly required

Additional products
400123 Layout Deep Seating cover



Layout Solo Set

1LYMCSS.+ W 68 H 28 D 35 ins
Seat height 17ins Arm height 24ins
Weight 95lbs
Assembly required

Additional products



Layout Single Seat - High Arms

1LYMACH.+ W 38 H 28 D 35 ins
Seat height 17ins Arm height 28ins
Weight 80lbs
Assembly required

Additional products
400123 Layout Deep Seating cover



Layout Single Seat - One High Arm

1LYMACHE.+ W 38 H 28 D 35 ins
Seat height 17ins Arm height 28ins
Weight 80lbs
Assembly required

Additional products
400123 Layout Deep Seating cover



Layout Double Seat - Low Arms

1LYM2.+ W 70 H 28 D 35 ins
Seat height 17ins Arm height 24ins
Weight 132lbs
Assembly required

Additional products
400124 Layout Deep Seating cover



Frame options ■ Arctic white .02 ■ Forge grey .14



Layout Double Seat - One Low Arm

1LYM2E.+ W 70 H 28 D 35 ins
Seat height 17ins Arm height 24ins
Weight 132lbs
Assembly required

Additional products
400124 Layout Deep Seating cover



Layout Double Seat - High Arms

1LYM2H.+ W 70 H 28 D 35 ins
Seat height 17ins Arm height 28ins
Weight 136lbs
Assembly required

Additional products
400124 Layout Deep Seating cover



Layout Double Seat - One High Arm

1LYM2HE.+ W 70 H 28 D 35 ins
Seat height 17ins Arm height 28ins
Weight 136lbs
Assembly required

Additional products
400124 Layout Deep Seating cover



Layout Companion Set - Low Arms

1LYMCS.+ W 103 H 28 D 35 ins
Seat height 17ins Arm height 24ins
Weight 152lbs
Assembly required



Layout Companion Set - High Arms

1LYMCSH.+ W 103 H 28 D 35 ins
Seat height 17ins Arm height 28ins
Weight 156lbs
Assembly required



Layout Lounger

1LYML1.+ L 68 W 33 H 28 ins
Seat height 17ins
Weight 86lbs
Assembly required

Additional products
400127 Layout Deep Seating cover



Layout Double Lounger

1LYML2.+ L 68 W 65 H 28 ins
Seat height 17ins
Weight 172lbs
Assembly required

Additional products
400129 Layout Deep Seating cover



Layout Tête-à-tête Set

1LYMTT.+ W 103 H 28 D 35 ins
Seat height 17ins Arm height 24ins
Weight 152lbs
Assembly required



Layout Single Ottoman

1LYMO1.+ W 33 H 17 D 33 ins
Weight 35lbs
Assembly required

Additional products
400126 Layout Deep Seating cover



Layout Double Ottoman

1LYMO2.+ W 65 H 17 D 33 ins
Weight 72lbs
Assembly required



Layout Single Bench

1LYMB1.+ W 33 H 28 D 35 ins
Seat height 17ins
Weight 51lbs
Assembly required



Layout High Arm with connector

1LYMPAH.+ W 33 H 19 D 7 ins
Weight 15lbs
Assembly required



Layout Low Arm with connector

1LYMPAL.+ W 28 H 15 D 5 ins
Weight 13lbs
Assembly required



Layout Corner Set - 2 Single backs + 2 connectors + 2 corner pillows + scatter cushion

1LYMPC.+ W 33 H 19 D 7 ins
Weight 30lbs
Assembly required



Layout Double Bench

1LYMB2.+ W 65 H 28 D 35 ins
Seat height 17ins
Weight 107lbs
Assembly required

Additional products
400125 Layout Deep Seating cover



Layout Single Chaise - Single Low Arm

1LYMC1.+ L 68 H 28 D 35 ins
Seat height 17ins Arm height 24ins
Weight 99lbs
Assembly required

Additional products
400128 Layout Deep Seating cover



Layout Double Chaise - Low Arms

1LYMC2.+ W 68 H 28 D 70 ins
Seat height 17ins Arm height 24ins
Weight 198lbs
Assembly required

Additional products
400129 Layout Deep Seating cover



Frame options ■ Arctic white .02 ■ Forge grey .14



Layout Seat Single, Layout Seat Double, Luna Lantern, Layout 160 Low Table, Layout 80 Bridging Table, Layout 40 Side Table, Layout Single Ottoman all with Arctic White frames, Carbon Beige main cushions, and teak table tops



Layout Corner Seat

1LYMCR.+ L 35 W 35 H 28 ins
Weight 64lbs
Assembly required

Additional products

400123 Layout cover



Layout Double Corner Seat

1LYMCR2.+ L 68 W 35 H 28 ins
Weight 119lbs
Assembly required

Additional products

400124 Layout cover



Layout Double Corner Seat + Low Arm

1LYMCR2E.+ L 78 W 35 H 28 ins
Weight 132lbs
Assembly required

Additional products

400124 Layout cover



Layout Double Corner Seat + High Arm

1LYMCR2EH.+ L 78 W 35 H 28 ins
Weight 134lbs
Assembly required

Additional products

400124 Layout cover



Layout Bridging Table 80

2LYB08.+ L 35 W 32 H 4 ins
Weight 26lbs
Assembly required



Layout Side Table 40 Ø

2LYSC04.+ L 16 W 55 H 22 ins
Weight 13lbs
Assembly required



Layout Narrow Low Table 80

2LYLN08.+ L 32 W 16 H 11 ins
Weight 18lbs
Assembly required



Layout Low Table 80

2LYL08.+ L 32 W 32 H 11 ins
Weight 31lbs
Assembly required

Additional products

400120 Layout Deep Seating cover



Layout Low Table 160

2LYL16.+ L 65 W 32 H 11 ins
Weight 54lbs
Assembly required

Additional products

400121 Layout Deep Seating cover



Layout Side Table 40 Ø with teak top and Arctic White frame



Layout Narrow Low Table 160

2LYLN16.+ L 65 W 16 H 11 ins
Weight 33lbs
Assembly required

Additional products

400122 Layout Deep Seating cover



Layout Side Table 80

2LYSN08.+ L 32 W 21 H 20 ins
Weight 15lbs
Assembly required



Layout Narrow Console Table 160

2LYN16.+ L 65 W 16 H 26 ins
Weight 53lbs
Assembly required



Frame options ■ Arctic White .02 ■ Forge Grey .14

Layout Dining



Layout Dining Armchair, Layout 130 Bench and Layout Table 200. All feature Forge Grey frames with either teak seat and back or teak top

Stainless Steel

Layout Dining

The Layout dining collection combines refined 316 marine-grade powder-coated stainless steel frames with teak seats and tabletops. Layout dining complements Layout Deep Seating perfectly and is also designed by award-winning international designers Andrew Jones and Nathalie de Leval.



Layout Dining Armchair

1LYAS.+ W 24 H 32 D 21 ins
Seat height 18ins Arm height 27ins
Weight 18lbs
Stackable



Layout Bench 130

1LY13.+ W 50 H 17 D 15 ins
Weight 29lbs



Layout Bench 200

1LY20.+ W 74 H 17 D 15 ins
Weight 35lbs



Layout Table 200

2LY20.+ L 77 W 39 H 29 ins
Clearance 25ins
Weight 86lbs Seats 8
Assembly required

Additional products

400766 Cover for 79in table and 6-8 chairs



Layout Table 260

2LY26.+ L 101 W 39 H 29 ins
Clearance 25ins
Weight 106lbs Seats 8
Assembly required

Additional products

400003 Cover for Layout 260 Table



Frame options ■ Arctic White .02 ■ Forge Grey .14



Layout Dining Armchair with Arctic White frame and with Teak back, seat and arms



Layout Bench 130 with Forge Grey frame and Teak Seat



Layout Dining Armchair with Forge Grey Frame and Teak back, seat and arms



Layout Dining Armchairs and Layout Bench 130 with Arctic White frame and tops, seats, arms and backs in teak

Luna



Luna Lantern, only available with a Graphite frame

Luna Lantern joins geometry and out-of-the-ordinary styling using powder-coated stainless steel, teak and glass. Hold the Luna Lantern to light your way, or hang the lantern on the powder-coated stainless steel frame and enjoy the charming shadows and reflections created by the reflective centre disc. Perfect for adding atmosphere to your evening outdoor socialising.



Luna Lantern

3LL	W 7 H 63 D 12 ins Weight 24lbs Assembly required 1 x Candle included* Additional candles can be purchased directly from Charles Farris
-----	--

*Candle specification

Description - 4x3 Ivory Pillar, Pack of 6 Code PC081028

Ingredients - Made in the UK with paraffin wax.

Non-drip and Non-smoking

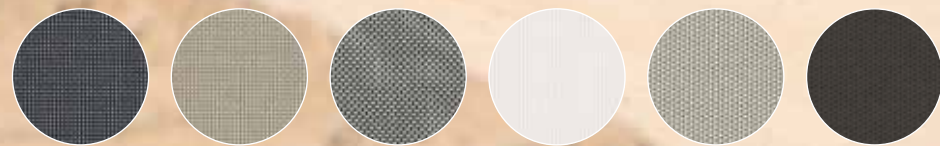
Colour options - Shown with the ivory colour option, other colours are available.

Mercury Armchair with Charcoal sling, Equinox
Table 180 circular and Equinox Lazy Susan 100

Mercury Dining



Sling options
More information on page 188



Charcoal* Titanium* Platinum* Pearl* Seagull* Carbon* * Non Powder Coated only * Powder Coated only

Stainless Steel

Mercury Dining

Contemporary Mercury dining furniture is made from 316 marine-grade stainless steel frames and includes high-back seating in a range of Textilene® coloured slings and arm finishes. Table tops are available in three colours of matte finish, acid-etched, tempered glass. The serving table with ceramic top and teak drawers and shelves is a practical addition to any outdoor dining space.



Mercury Armchair

1MEA.+ W 22 H 35 D 22 ins
Seat height 18ins Arm height 25ins
Weight 15lbs
Stackable

Additional products

400903 Mercury cover 4 stacked
400904 Mercury cover 2 stacked



Mercury Armchair

1MEA.+ W 22 H 35 D 22 ins
Seat height 18ins Arm height 25ins
Weight 15lbs
Stackable

Additional products

400903 Mercury cover 4 stacked
400904 Mercury cover 2 stacked



Mercury Armchair

1MEPA.+ W 22 H 35 D 22 ins
Seat height 18ins Arm height 25ins
Weight 15lbs
Stackable

Additional products

400903 Mercury cover 4 stacked
400904 Mercury cover 2 stacked



Frame options ■ Graphite .01 ■ Arctic White .02 Sling options ● Charcoal .500 ● Titanium .502 ● Platinum .504 ● Pearl .505 ● Seagull .512 ● Carbon .513

Mercury Table 220

2ME22.+ L 87 W 40 H 29 ins
 Clearance 27ins
 Weight 159lbs Seats 8 to 10
 Assembly required

Additional products

400766 Cover for 79in table and
 6-8 chairs



Mercury Table 120 Ø

2MEC12.+ Ø 47 H 29 ins
 Clearance 28ins
 Weight 66lbs Seats 4 to 6
 Assembly required

Additional products

400751 Cover for 36-48 ins
 table and 4 chairs



Mercury Serving Table

2MEMS.+ L 48 W 23 H 37 ins
 Weight 119lbs
 Assembly required

Additional products

2MEST Extra Tabletop
 400770 Cover



Glass options ● Sea Ice .604 ● Charcoal .606 ● Ceramic options ● Oxide .805 ● Frost .806 ● Dusk .808



Mercury Table 220 Sea Ice and Mercury Dining Armchairs with pearl sling

Mercury Deep Seating



Mercury Deep Seating configuration with Taupe cushions

Stainless Steel

Mercury Deep Seating

Mercury modular deep seating will provide a layout that perfectly fits your outdoor living space. Combining 316 marine-grade stainless steel and premium water-repellent Sunbrella® Rain® fabric ensures the Mercury deep seating collection is attractive and soft to the touch.

For cushion codes please contact your local retailer.



Mercury Armchair

1MEDAC.+ W 34 H 28 D 32 ins
Seat height 16ins Arm height 28ins
Weight 33lbs
Water repellent fabric
Assembly required

Additional products

410801 Mercury cover



Mercury Left Module

1MEDL.+ W 32 H 28 D 32 ins
Seat height 16ins Arm height 28ins
Weight 29lbs
Water repellent fabric
Assembly required

Additional products

410802 Mercury 2 seater cover
410803 Mercury 3 seater cover



Mercury Centre Module

1MEDM.+ W 30 H 28 D 32 ins
Seat height 16ins
Weight 24lbs
Water repellent fabric
Assembly required

Additional products

410803 Mercury cover



Mercury Right Module

1MEDR.+ W 32 H 28 D 32 ins
Seat height 16ins Arm height 28ins
Weight 29lbs
Water repellent fabric
Assembly required

Additional products

410802 Mercury 2 seater cover
410803 Mercury 3 seater cover



Mercury Corner Module

1MEDC.+ W 32 H 28 D 32 ins
Seat height 16ins Arm height 28ins
Weight 29lbs
Water repellent fabric
Assembly required

Additional products

410805 Mercury cover



Mercury Double Module without arms

1MEDB2.+ W 59 H 28 D 32 ins
Seat height 16ins
Weight 51lbs
Water repellent fabric
Assembly required

Additional products

410802 Mercury cover



Mercury Serving Table



Mercury Deep Seating configuration with Taupe main cushions and Natural optional scatter cushion with Equinox Conversation Tables 100



Mercury Ottoman

1MEDO.+ W 30 H 16 D 30 ins
Weight 20lbs
Water repellent fabric
Assembly required

Additional products
410804 Mercury cover



Mercury Low Table 76 - Oxide top

2MEL07 L 30 W 30 H 16 ins
Weight 42lbs
Assembly required

Additional products
410806 Mercury cover



Teak

18 Collections 3 international design awards

Barlow Tyrie at Sea Gem.

Monterey Deep Seating Armchair and Monterey Deep Seating Ottoman with Frost Chine optional cushions

Apex



Apex Extending Table 390 and Horizon Armchairs with Charcoal sling

The Apex Extending Table 390 is fit for a banquet. It is our largest teak table, seating up to 14 people in style and comfort.



Apex Extending Table 390

2APX39 L 106–154 W 47 H 29 ins
Clearance 24ins
Weight 276lbs Seats 14
Assembly required

Additional products

400768 Cover for Apex extending table 390 (open)

Ascot



Ascot Highback Recliner Chairs and Ascot Table 110

Teak

Ascot

The Ascot is a traditional, elegant collection of teak folding furniture with a pleasing simplicity of design that makes it ideal to combine with many of our other collections.



Ascot Chair

1AS W 19 H 37 D 24 ins
Seat height 17ins
Weight 15lbs
Folding

Additional products
800004 Ascot cushion
Water repellent cushion



Ascot Carver

1ASC W 23 H 37 D 24 ins
Seat height 17ins Arm height 26ins
Weight 18lbs
Folding

Additional products
800004 Ascot cushion
Water repellent cushion



Ascot Highback Recliner Chair

1ASR W 24 H 45 D 25 ins
Seat height 17ins Arm height 25ins
Weight 29lbs
Folding

Additional products
800002 Ascot Highback Recliner cushion
Water repellent recliner cushion
800003 Seat pad
Water repellent seat pad



Ascot Table 110 Ø

2AS11 Ø 43 H 28 ins
Clearance 27ins
Weight 31lbs Seats 4 to 6
Folding Parasol hole



Ascot Footstool / Side table

1REFS W 17 H 17 D 17 ins
Weight 11lbs
Folding

Additional products
800041 Ascot cushion
Water repellent cushion



Ascot Clip-on Tray for Recliner

1RET W 8 L 13 ins
Weight 2lbs



Bermuda



Bermuda Chair and Bermuda Pedestal Table 90

Teak

Bermuda

Perfect for the garden or the pool side, the Bermuda chair and table come in standard and high dining options.



Bermuda Chair

1BE W 18 H 33 D 20 ins
Weight 18lbs
Assembly required



Bermuda Counter Height Chair

1BEM W 18 H 39 D 20 ins
Seat height 26ins
Weight 22lbs
Assembly required



Bermuda High Dining Chair

1BEH W 18 H 42 D 21 ins
Seat height 29ins
Weight 22lbs
Assembly required



Bermuda Pedestal Table 90 Ø

2BEC09 Ø 35 H 29 ins
Clearance 28ins
Weight 33lbs
Assembly required Parasol hole

Additional products
400751 Cover for 36–48 ins table and 4 chairs



Bermuda Counter Height Table 90 Ø

2BECM09 Ø 35 H 36 ins
Clearance 34ins
Weight 35lbs Seats 2
Assembly required Parasol hole

Additional products
400752 Cover



Bermuda High Dining Table 90 Ø

2BECH09 Ø 35 H 39 ins
Clearance 37ins
Weight 37lbs Seats 2
Assembly required Parasol hole

Additional products
400752 Cover

Capri



Capri Lounger - Base x 4, Capri Lounger - Ultra and Capri Lounger - Standard with optional Taupe cushions

Teak

Capri

Our classic Capri teak lounger is available in several options ranging from the static Base, which can be linked together to form a raised platform of any size, to the Ultra, which includes premium extras that make sunbathing as comfortable as possible.



Capri Lounger - Base

1CAB L 78 W 25 H 31 ins
Seat height 9ins
Weight 46lbs
Assembly required

Additional products

800006 Capri Lounger - Base cushion
400733 Capri cover



Capri Lounger - Standard

1CAS L 78 W 28 H 36 ins
Seat height 12ins
Weight 44lbs
Assembly required

Additional products

400733 Capri cover
800006 Capri cushion



Capri Lounger - Ultra

1CAU L 78 W 16 H 36 ins
Seat height 12ins Arm height 16ins
Weight 64lbs
Assembly required

Additional products

810510 Capri Lounger - Ultra cushion
400733 Capri cover



Capri Clip-on Tray - for use with 1CAS (Capri Lounger - Standard)

1CAT L 16 W 9 H 2 ins
Weight 4lbs



Brass Clips - for use with 1CAB (Capri Lounger - Base)

1CBC Weight 2lbs



Capri Lounger - Ultra with Taupe optional cushions.
Cushion headrest is different in the USA

Chesapeake



Chesapeake Chairs with optional cushions in Heather Beige

Teak

Chesapeake

The Chesapeake solid teak dining collection includes dining chairs, rectangular and round tables. The design marries traditional elements, including rolled armrests on the chairs and curved sides to the dining tables, with clean contemporary touches that include nylon glides on the bottom of tapered legs.



Chesapeake Chair

1CP W 18 H 36 D 25 ins
Seat height 17ins
Weight 15lbs
Assembly required

Additional products
800003 Chesapeake Chair cushion



Chesapeake Carver

1CPA W 24 H 36 D 25 ins
Seat height 17ins Arm height 26ins
Weight 20lbs
Assembly required

Additional products
800003 Chesapeake Chair cushion



Chesapeake Table 120

2CPC12 Ø 45 H 29 ins
Clearance 28ins
Weight 51lbs Seats 4 to 6
Assembly required

Additional products
400751 Cover for table and 4 chairs



Chesapeake Table 280

2CP28 L 110 W 46 H 29 ins
Clearance 25ins
Weight 106lbs Seats 10
Assembly required

Cocoon



Cocoon Deep Seating Armchair, Cocoon Three-seater Settee with Chalk main cushions and Chalk and Frosty Chine scatter cushions and Monterey Low Table 150 with Ceramic top

Teak

Cocoon

Cocoon is a stunning contemporary collection by the international design house, Astheimer. Curving backs, teak legs, and carefully hand-wound Chalk coloured olefin all-weather rope make each piece exquisite from any angle.

For cushion codes please contact your local retailer.



Cocoon Deep Seating Armchair

1CCDA.401 W 33 H 28 D 33 ins
Seat height 18ins
Weight 40lbs
Water repellent fabric



Cocoon Deep Seating Three-seater Settee

1CCD3.401 L 74 H 28 D 33 ins
Seat height 46cm
Weight 66lbs
Water repellent fabric



Cocoon Three Seater and Armchair with Chalk main and Frosty Chine scatter cushions, and Monterey Low Table 150 with Frost Ceramic Top

Drummond



The Drummond collection comprises two large circular dining tables with heavy table tops and impressive turned legs. These tables will accept our largest parasols and a Lazy Susan is optionally available.



Drummond Table 150 Ø

2DR15 Ø 59 H 28 ins
Clearance 24ins
Weight 104lbs Seats 6
Assembly required Parasol hole

Additional products

400753 Cover for 150cm circular table
and 6 chairs



Drummond Table 185 Ø

2DR18 Ø 73 H 28 ins
Clearance 24ins
Weight 112lbs Seats 8
Assembly required Parasol hole

Additional products

400754 Cover for 180cm circular table
and 8 chairs



Lazy Susan 75 for Table 2DR15

2LS07 Ø 29ins
Weight 15lbs



Lazy Susan 110 for Table 2DR18

2LS11 Ø 43ins
Weight 31lbs

Haven



Haven Swivel Rocker, Haven Armchair, Haven Left Module, Haven Centre Module x 2, Haven Right Module, Haven Left Module, Haven Centre Module, Haven Right Module with Stone Seat and Back cushions with optional scatter cushions in Natural and Heritage Rust

Haven is a luxurious collection of modular teak furniture, featuring a high backrest for optimum comfort and conversation-height tables that ensure convenient, relaxed entertaining.



Haven Armchair

1HADA.+ W 33 H 40 D 38 ins
 Seat height 17ins Arm height 22ins
 Weight 40lbs
 Assembly required
 800043 Haven cushion

Headrest not available in USA



Haven Swivel Rocker

1HASR.+ W 33 H 36 D 19 ins
 Seat height 19ins Arm height 23ins
 Weight 73lbs
 Assembly required
 800043 Haven cushion



Haven Left Module

1HADML.+ W 30 H 36 D 37 ins
 Seat height 17ins Arm height 22ins
 Weight 33lbs
 Assembly required
 800047 Haven cushion



Haven Centre Module

1HADMM.+ W 26 H 36 D 35 ins
 Seat height 17ins
 Weight 24lbs
 Assembly required
 800047 Haven cushion



Haven Right Module

1HADMR.+ W 30 H 36 D 37 ins
 Seat height 17ins Arm height 22ins
 Weight 33lbs
 Assembly required
 800047 Haven cushion



Haven Corner Module

1HADMC.+ W 35 H 36 D 35 ins
 Seat height 17ins
 Weight 35lbs
 Assembly required
 800059 Haven cushion



Haven Three-seater Settee

1HAD3.+ W 33 H 40 D 38 ins
 Seat height 18ins Arm height 22ins
 Weight 117lbs
 Assembly required
 800047 x3 Haven cushion



Haven Ottoman

1HAO.+ W 31 H 16 D 26 ins
 Weight 20lbs
 Assembly required
 800045 Haven cushion

Additional products
 400109 Ottoman cover



Haven Conversation Table 100

2HASC10 L 39 W 39 H 19 ins
 Weight 40lbs
 Assembly required Parasol hole

Additional products
 400782 Haven table cover



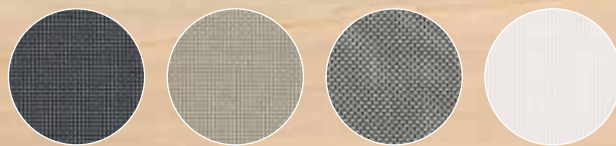
Haven Deep Seating Three-seater Settee and Haven Conversation Table 100 Square

Horizon

Horizon Lounger and Horizon Lounger sunshade.
Both with Charcoal slings



Sling options
More information on page 188



Charcoal Titanium Platinum Pearl

Teak

Horizon

Horizon is an effortlessly sleek, contoured and modern design of chair and lounger. Practical and well-proportioned with stylish lines, options are available with teak frames and Textilene® slings or all-teak with strong horizontal contours.



Horizon Armchair

1HOAS W 23 H 35 D 23 ins
Seat height 17ins Arm height 26ins
Weight 15lbs
Stackable

Additional products

400912 Horizon cover, 2 stacked
400914 Horizon cover, 4 stacked



Horizon Stacking Armchair

1HOAS.T W 23 H 35 D 22 ins
Seat height 18ins Arm height 16ins
Weight 18lbs
Stackable

Additional products

800008 Horizon Armchair cushion
Water repellent Horizon
Armchair cushion

400912 Horizon cover, 2 stacked
400914 Horizon cover, 4 stacked



Horizon Chair

1HOF W 19 H 23 D 22 ins
Seat height 18ins
Weight 15lbs
Folding



Horizon Carver

1HOCF W 22 H 23 D 22 ins
Seat height 18ins Arm height 26ins
Weight 15lbs
Folding



Horizon Lounger

1HOL L 81 W 26 H 36 ins
Seat height 13ins
Weight 37lbs

Additional products

400733 Horizon cover



Horizon Lounger Sunshade

1LSS L 77 W 27 H 34.5 ins
Assembly required



Sling options Charcoal .500 Titanium .502 Platinum .504 Pearl .505



Horizon Chairs and Horizon Carvers with Platinum slings and Equinox Extending Table 230

Linear



Teak

Linear

The Linear teak range combines a modern design with generous dimensions. Architectural qualities in the deep seating are echoed in the fine lines of Linear dining tables. Emphasised mitred corners and finger joints add an interesting detail to the collection.



Linear Carver

1LIA W 23 H 36 D 24 ins
Seat height 17ins Arm height 26ins
Weight 20lbs
Assembly required

Additional products
800087 Linear Carver cushion



Linear Bench 135

1L113 L 53 W 16 H 17 ins
Weight 29lbs
Assembly required

Additional products
800077 Linear Bench 135 cushion



Linear Bench 150

1L115 L 61 W 16 H 17 ins
Weight 31lbs
Assembly required

Additional products
800078 Linear Bench 150 cushion



Linear Armchair

1LIDA.+ W 38 H 29 D 35 ins
Seat height 16ins Arm height 24ins
Weight 40lbs

810500 Linear cushion

Additional products
410901 Linear cover



Linear Two-seater Settee

1LID2.+ L 71 H 29 D 35 ins
Seat height 16ins Arm height 24ins
Weight 60lbs

810500 x2 Linear cushion

Additional products
410902 Linear cover



Linear Three-seater Settee

1LID3.+ L 104 H 29 D 35 ins
Seat height 16ins Arm height 24ins
Weight 93lbs

810500 x3 Linear cushion

Additional products
410903 Linear cover

Linear Deep Seating Armchairs, Linear Deep Seating Three-seater Settee in Taupe with optional scatter cushions in Taupe and Natural and Linear Side Table 76





Linear Ottoman

1LIDO.+ W 33 H 16 D 33 ins
Weight 24lbs

Optional

810550 Linear cushion
410908 Linear cover



Linear Table 90

2LI09 L 35 W 35 H 30 ins
Clearance 26ins
Weight 44lbs Seats 4
Assembly required Parasol hole

Additional products

400751 Linear cover



Linear Table 150

2LI15 L 59 W 35 H 30 ins
Clearance 26ins
Weight 55lbs Seats 6
Assembly required Parasol hole

Additional products

400765 Linear cover



Linear Table 200

2LI20 L 79 W 38 H 30 ins
Clearance 26ins
Weight 88lbs Seats 6-8
Assembly required Parasol hole

Additional products

400766 Cover for 79in table and
6-8 chairs



Linear Extending Table 230

2LIX23 L 61-91 W 43 H 30 ins
Clearance 26ins
Weight 154lbs Seats 6-8
Assembly required Parasol hole

Additional products

400765 Linear Table cover (closed)



Linear Side Table 76

2LIS07 L 30 W 30 H 20 ins
Weight 29lbs
Assembly required

Additional products

410905 Linear cover



Linear Low Table 76

2LIL07 L 30 W 30 H 16 ins
Weight 24lbs
Assembly required

Additional products

410904 Linear cover



Linear Low Table 120

2LIL12 L 47 W 25 H 16 ins
Weight 33lbs
Assembly required

Additional products

410906 Linear cover



Linear Low Table 150

2LIL15 L 59 W 30 H 16 ins
Weight 42lbs
Assembly required

Additional products

410907 Linear cover



Linear Extending Table 230 with Linear Carver Chairs and Linear Bench 150

Mission



Mission Reclining Armchair with Charcoal main cushions and Paris Red optional cushions

Teak

Mission

Mission is a fine example of the 'Arts & Crafts' style from the late nineteenth century. The armchair is beautifully proportioned and extremely comfortable with a backrest that is adjustable to three positions.



Mission Reclining Armchair

1MIA.+ W 16 H 37 D 39 ins
Seat height 16ins Arm height 22ins
Weight 49lbs
Assembly required

Optional
800046 Mission cushion
400721 Mission cover



Mission Footstool

1MIFS.+ L 18 W 18 H 14 ins
Weight 11lbs

Optional
800046 Mission cushion



Mission Low Table 60 Square

2MIL06 L 23 W 23 H 15 ins
Weight 22lbs

Monaco



Monaco Chair and Armchairs with optional Natural cushions with Equinox Extending Dining Table 230

Teak

Monaco

The Monaco collection is an elegant contemporary design featuring extensive use of slender-shaped solid teak components. The seating has gently curving shapes, with contoured backs and seats.



Monaco Chair

1MO W 19 H 36 D 25 ins
Seat height 17ins
Weight 20lbs
Assembly required

Additional products

800005 Monaco Chair cushion
Water repellent Chair cushion



Monaco Armchair

1MOA W 22 H 37 D 25 ins
Seat height 17ins Arm height 25ins
Weight 26lbs
Assembly required

Additional products

800001 Monaco Armchair cushion
Water repellent Armchair cushion



Monaco Seat 150

1MO15 L 57 H 36 D 25 ins
Seat height 17ins Arm height 26ins
Weight 44lbs
Assembly required

Additional products

800015 Monaco Seat 150 cushion
Water repellent Chair cushion



Monaco Seat 200

1MO20 L 79 H 36 D 26 ins
Seat height 17ins Arm height 26ins
Weight 75lbs
Assembly required

Additional products

800019 Monaco Seat 200 cushion
Water repellent cushion



Monaco Swing Seat - with Ropes

1MOSW15 L 59 H 26 D 24 ins
Arm height 15ins
Weight 44lbs
Assembly required

Additional products

800015 Monaco Seat 150 cushion
Water repellent Chair cushion



Monaco Table 150

2MO15 L 59 W 35 H 28 ins
 Clearance 24ins
 Weight 51lbs Seats 6
 Assembly required Parasol hole

Additional products

400765 Cover for 59in table
 and 6 chairs



Monaco Extending Table 240

2MOX24 L 69-94 W 35 H 28 ins
 Clearance 24ins
 Weight 79lbs Seats 8
 Assembly required Parasol hole*

*A parasol can only be used through
 the table when it is extended



Monaco Low Table 44

2MOL04 L 17 W 17 H 16 ins
 Weight 11lbs
 Assembly required



Monaco Low Table 60

2MOL06 L 23 W 23 H 16 ins
 Weight 20lbs
 Assembly required



Monaco Low Table 100

2MOL10 L 40 W 23 H 16 ins
 Weight 26lbs
 Assembly required

Additional products

400783 Monaco cover



Monaco Armchair

Monterey

Monterey Table 300 with Frost Ceramic top and Monterey Armchairs with Chalk cord

Cord options
More information on page 188



Brown



Chalk

Teak

Monterey

Our Monterey collection combines teak with the latest materials - Italian high-fired ceramic table tops and all-weather olefin cord in the award-winning Monterey seating. The all-teak seating option provides superb comfort with statement, contemporary ellipse-shaped slats and detailing, creating a stunning appearance when viewed from both front and back. Optional cushions are available in Sunbrella® or Sunbrella Rain® fabric in various colours for additional comfort.



Monterey Armchair

1MTA W 25 H 33 D 24 ins
Seat height 18ins Arm height 26ins
Weight 15lbs
Assembly required

Additional products

810811 Monterey Armchair cushion



Monterey Deep Seating Armchair

1MTDA W 31 H 42 D 40 ins
Seat height 17ins Arm height 25ins
Weight 35lbs
Assembly required

Additional products

800096 Monterey Armchair cushion
400111 Monterey cover



Monterey Deep Seating Ottoman

1MTDO L 27 W 22 H 17 ins
Weight 13lbs
Assembly required

Additional products

800095 Monterey Ottoman cushion



Monterey Armchair

1MTA.T W 25 H 34 D 25 ins
Seat height 18ins Arm height 26ins
Weight 27.5lbs
Assembly required

Additional products

810881 Monterey cushion
810811 Monterey Armchair cushion

Cord options
● Brown .400 ● Chalk .401



Monterey Deep Seating Armchair

1MTDA.T W 31 H 42 D 40 ins
Seat height 17ins Arm height 25ins
Weight 51lbs
Assembly required

Additional products

800096 Monterey Armchair cushion
400111 Monterey cover



Monterey Deep Seating Ottoman

1MTDO.T L 27 W 22 H 17 ins
Weight 37lbs
Assembly required

Additional products

800095 Monterey Ottoman cushion



Monterey Teak Three-seater Settee
with optional Frosty Chine cushions and
Monterey Low Table 150 with Oxide
Ceramic top



Monterey Deep Seating Three-seater Settee

1MTD3.+ L 76 H 32 D 32 ins
 Seat height 17ins Arm height 25ins
 Weight 68lbs
 Assembly required

Additional products
 800097 Monterey Three-seater cushion
 400110 Monterey cover



Monterey Deep Seating Three-seater Settee

1MTD3.T L 76 H 32 D 32 ins
 Seat height 17ins Arm height 25ins
 Weight 95lbs
 Assembly required

Additional products
 800097 Monterey Three-seater cushion
 400110 Monterey cover

The design of the Monterey headrest (right) is different in the USA. Please contact your local retailer for more details.



Monterey Table 300

2MT30.+ L 118 W 39 H 29 ins
 Clearance 27ins
 Weight 179lbs Seats 10
 Assembly required

Additional products
 400771 Cover for 118in table



Monterey Table 200

2MT20.+ L 79 W 39 H 29 ins
 Clearance 27ins
 Weight 119lbs Seats 6
 Assembly required

Additional products
 400766 Cover for 79in table and 6-8 chairs



Monterey Table 100

2MT10.+ L 39 W 39 H 29 ins
 Clearance 27ins
 Weight 86lbs Seats 4
 Assembly required

Additional products
 400751 Cover for 36-48 ins table and 4 chairs



Monterey Low Table 150

2MTL15.+ L 59 W 20 H 18 ins
 Weight 51lbs
 Assembly required



Monterey Side Table 50

2MTS05.+ L 20 W 20 H 22 ins
 Weight 22lbs
 Assembly required



From top left:
 Monterey Deep Seating Armchair with Carbon Beige optional cushions.
 Monterey Low Table 150 with Oxide Ceramic top.
 Monterey Deep Seating Three-seater Settee with Frosty Chine optional cushions.
 Monterey Armchair with Chalk cord.
 Table 200 Rectangular with Oxide Ceramic top



Ceramic options ● Oxide .805 ● Frost .806 ● Brown .400 ● Chalk .401

Safari®



Stock sling options
Special order colours available (see p.184)



Forest Green White Sand Pepper

Safari® Armchair with White Sand sling

Teak

Safari®

Based on the “director’s chair”, the Safari range of comfortable and lightweight folding furniture is ideal for putting in the car for a picnic or day at the races.



Safari® Armchair

1SA.+	W 24 H 32 D 20 ins
	Seat height 18ins Arm height 24ins
	Weight 13lbs
	Folding



Sling options ● Forest Green .200 ● White Sand .201 ● Pepper .204



Safari® Clip-on Tray for Armchair 1SA

1SAT	L 12 W 7
	Weight 2lbs



Safari® Table 68

2SA	L 27 W 23 H 28 ins
	Weight 18lbs Seats 2
	Folding

Stirling



Stirling Extending Table 320
and Linear Armchairs

The Stirling extending oval dining table uses traditional mortise and tenon joinery for strength and durability. The solid under-frame ensures optimum stability and legs set back from the table edge provide extra legroom to users. The table can be extended quickly and without effort by one person with a parasol remaining in situ.



Stirling Extending Table 320

2STX32 L 93–126 W 43 H 28 ins
Clearance 23ins
Weight 172lbs Seats 8 to 10
Assembly required Parasol hole

Additional products

400767 Stirling table cover (closed)
and 8–10 chairs

Storage



Storage Chest 150

Teak

Storage

Ideal for protecting cushions and other garden accessories, our large, beautifully made storage chest is weatherproof, with the top and sides caulked with Sikaflex® polyurethane marine deck sealant. The chests are ventilated and have a brass lock for security. The chest bottom prevents the ingress of insects yet is easily removed for cleaning, and the opening and closing of the chest lid is made easy with gas struts.



Storage Chest 150

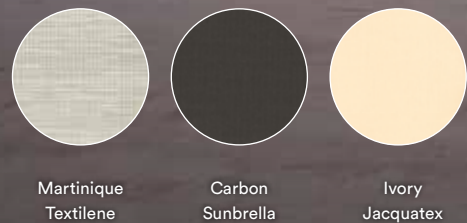
3SC15 L 62 W 33 H 28 ins
Weight 154lbs Capacity 625 litres
Assembly required

Additional products

400773 Storage cover

Woodland

Stock fabric options
Special order colours available (see p.188)



Martinique Textilene Carbon Sunbrella Ivory Jacquatex



Teak

Woodland

The Woodland Screen with an integral lighting effect, creates greater intimacy and enclosure for your seating or lounging area. The random pattern of teak slats with soft rounded edges and stone-shaped feet are inspired by nature and create an atmosphere of natural, sheltered seclusion. Designed by award-winning international designers Andrew Jones and Nathalie de Leval. There is an optional removable curtain to complete the feeling of seclusion and act as a windbreak.



Woodland Screen - Portrait

3WS12 W 48 H 70 ins
Weight 90lbs
Assembly required
Discreet lighting included

Additional products

3WSC12 Screen curtain



Woodland Screen - Landscape

3WS23 W 90 H 52 ins
Weight 101lbs
Assembly required
Discreet lighting included

Additional products

3WSC28 Screen curtain



Curtain options ● Martinique .509 ● Carbon .513 ● Ivory .601

Rustic Teak

1 Collection



Titan Table 180, Titan Bench 130
and Titan Armchairs. Titan Armchairs
are only available with a Black frame

Titan

Rustic Teak

Titan

Our Titan rustic teak range features a robust design with grand dimensions. The teak used for this furniture is laminated and includes wild grain patterns and knots that give it a rugged farmhouse appeal. The Titan Armchair features a frame made from aluminium powder-coated in Black.

Titan dining tables do not have parasol holes.



Titan 240 Table, Titan Armchairs with optional cushions, and Titan 200 Bench with optional cushion. All optional cushions in Porto Blue Chine. Titan Armchairs are only available with a Black frame



Titan Armchair

1TIA.08 W 24 H 34 D 25 ins
Seat height 18ins Arm height 27ins
Weight 20lbs
Stackable

Additional products

800084 Titan Armchair cushion
400212 Titan cover (2 chairs)
400213 Titan cover (3 chairs)
400214 Titan cover (4 chairs)



Titan Bench 130

1TI13 L 51 W 16 H 17 ins
Weight 64lbs
Assembly required

Additional products

800088 Titan Bench 130 cushion



Titan Bench 200

1TI20 L 79 H 17 D 16 ins
Weight 79lbs
Assembly required

Additional products

800085 Titan Bench 200 cushion



Titan Bench 260

1TI26 L 102 H 17 D 16 ins
Weight 90lbs
Assembly required

Additional products

800086 Titan Bench 260 cushion



Titan High Dining Chair

1TIH.08 W 18 H 43 D 20 ins
Seat height 31ins
Weight 53lbs
Assembly required Swivel



Titan Counter Height Chair

1TIM.08 W 18 H 37 D 20 ins
Seat height 26ins
Weight 51lbs
Assembly required Swivel



Titan Table 100

2TI10 L 39 W 39 H 30 ins
Clearance 24ins
Weight 126lbs Seats 4
Assembly required

Additional products
400751 Cover for 36-48 ins table and 4 chairs



Titan Table 180

2TI18 L 71 W 39 H 30 ins
Clearance 24ins
Weight 168lbs
Assembly required

Additional products
400766 Cover for 79in table and 6-8 chairs



Titan Table 240

2TI24 L 94 W 39 H 30 ins
Clearance 24ins
Weight 209lbs Seats 6-8
Assembly required

Additional products
400769 Cover for Titan table 240



Titan Table 300

2TI30 L 118 W 39 H 30 ins
Clearance 24ins
Weight 245lbs Seats 8-10
Assembly required

Additional products
400771 Cover for 118in table



Titan High Dining Table 75

2TIH07.08 L 30 W 30 H 41 ins
Clearance 39ins
Weight 44lbs
Assembly required



Titan Counter Height Table 75

2TIM07.08 L 30 W 30 H 36 ins
Clearance 34ins
Weight 42lbs
Assembly required



Titan Serving Table 136

2TIS.08 L 54-70 W 24 H 37 ins
Weight 163lbs
Assembly required

Additional products
400924 Titan cover



Titan Serving Table 136 only available with a black frame

Aura High Dining Armchairs with Arctic White frame and Pearl sling and Aura High Dining Table 140 with Arctic White frame

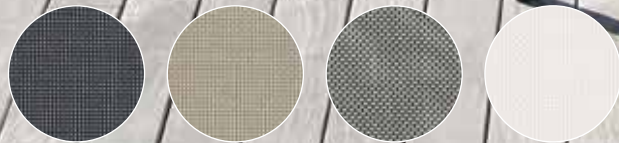
Aluminium

1 Collection

Aura Chair (x6), Aura Armchair (x2) and Aura Table 200. The Chairs feature a Graphite frame and Charcoal sling. The Table features a Graphite frame

Aura Dining

Sling options
More information on page 188



Charcoal Titanium Platinum Pearl

Aluminium

Aura Dining

Aura is a modern, elegant, lightweight dining collection that combines powder-coated aluminium frames and teak table tops with aluminium inlay. The sun loungers and armchairs feature teak armrests and stack to facilitate easy storage.



Aura Chair

1AU.+ + W 20 H 36 D 26 ins
Seat height 18ins
Weight 9lbs
Stackable



Aura Armchair

1AUA.+ + W 23 H 36 D 26 ins
Seat height 18ins Arm height 26ins
Weight 15lbs
Stackable

Additional products

400902 Aura cover (2 chairs)
400901 Aura cover (4 chairs)



Aura Table 90 - Aluminium Top

2AUA09.+ L 35 W 35 H 29 ins
Clearance 26ins Seats 4
Weight 40lbs
Assembly required

Additional products

400751 Cover for 36-48 ins table and 4 chairs



Aura Table 150 - Aluminium Top

2AUA15.+ L 57 W 35 H 29 ins
Clearance 26ins Seats 6
Weight 51lbs
Assembly required Parasol hole

Additional products

400765 Cover for 59in table and 6 chairs



Aura Table 200 - Aluminium Top

2AUA20.+ L 79 W 35 H 29 ins
Clearance 26ins Seats 8
Weight 57lbs
Assembly required Parasol hole

Additional products

400766 Cover for 79in table and 6-8 chairs



Aura Aluminium Narrow Table 200 - Aluminium Top

2AUAN20 L 79 W 28 H 29 ins
Clearance 26ins Seats 6 to 8
Weight 57lbs
Assembly required Parasol hole



Frame options ■ Graphite .01 ■ Arctic White .02 ■ Champagne .04 ■ Titanium .502 ■ Platinum .504 ■ Pearl .505
Sling options ● Charcoal .500 ● Titanium .502 ● Platinum .504 ● Pearl .505



Aura Table 90

2AU09.+ L 35 W 35 H 29 ins
 Clearance 26ins
 Weight 40lbs Seats 4
 Assembly required Parasol hole

Additional products
 400751 Cover for 36–48 ins
 table and 4 chairs



Aura Table 150

2AU15.+ L 57 W 35 H 29 ins
 Clearance 26ins
 Weight 53lbs Seats 6
 Assembly required Parasol hole

Additional products
 400765 Cover for 59in table
 and 6 chairs



Aura Table 200

2AU20.+ L 79 W 35 H 29 ins
 Clearance 26ins
 Weight 68lbs Seats 8
 Assembly required Parasol hole

Additional products
 400766 Cover for 79in table
 and 6–8 chairs



Aura Table 300

2AU30.+ L 118 W 40 H 30 ins
 Clearance 26ins
 Weight 117lbs Seats 8 to 10
 Assembly required Parasol hole

Additional products
 400771 Cover for 118in table



Aura Extending Table 230

2AUX23.+ L 59–90 W 42 H 30 ins
 Clearance 26ins
 Weight 101lbs Seats 6 to 8
 Assembly required Parasol hole

Additional products
 400765 Cover for 59in table and 6 chairs



Aura Table 140 Ø

2AUC14.+ Ø 56 H 30 ins
 Clearance 26ins
 Weight 73lbs Seats 6
 Assembly required Parasol hole

Additional products
 400753 Cover for 59in circular
 table and 6 chairs



Frame options ■ Graphite .01 ■ Arctic White .02 ■ Champagne .04



Aura Table 200 with Graphite frame and Aura Armchairs with Graphite frames and Charcoal slings



Aura Dining Tables include a parasol hole and solid teak hole cap

Aura Dining Table 140 Circular



Aura Armchairs with Graphite frames and Charcoal slings, stacked



Aura Narrow Dining Table 140

2AUAN14.+ L 55 W 28 H 29 ins
 Clearance 26ins
 Weight 46lbs Seats 4
 Assembly required Parasol hole

Additional products
 400920 Aura 140 Narrow Table cover



Aura Narrow Table 200 - Aluminium Top

2AUAN20.+ L 79 W 28 H 29 ins
 Clearance 26ins
 Weight 53lbs Seats 6 to 8
 Assembly required Parasol hole

Additional products
 400215 Aura 200 Narrow Table cover



Aura Narrow Table 140

2AUN14.+ L 55 W 28 H 29 ins
 Clearance 26ins
 Weight 37lbs Seats 4
 Assembly required Parasol hole

Additional products
 400920 Aura 140 Narrow Table cover



Aura Narrow Table 200

2AUN20.+ L 79 W 28 H 29 ins
 Clearance 26ins
 Weight 50lbs Seats 6 to 8
 Assembly required Parasol hole

Additional products
 400215 Aura 200 Narrow Table cover



Aura Serving Table Rectangular

2AUS.+ L 47 W 23 H 33 ins
 Weight 57lbs
 Assembly required

Additional products
 400770 Aura serving table cover

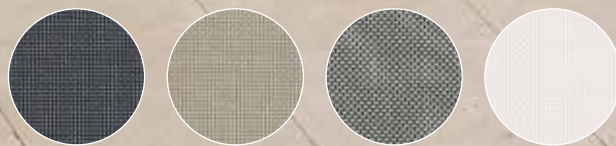


Frame options ■ Graphite_.01 ■ Arctic White_.02 ■ Champagne_.04

Aura High Dining



Sling options
More information on page 188



Charcoal Titanium Platinum Pearl

Frame options ■ Graphite .01 ■ Arctic White .02 ■ Champagne .04 ■ Sling options ● Titanium .502 ● Platinum .504 ● Pearl .505



Aura High Dining Carver

1AUHC W 23 H 47 D 24 ins
Seat height 30ins Arm height 38ins
Weight 13lbs
Assembly required



Aura Counter Height Armchair

1AUMC W 23 H 42 D 24 ins
Seat height 25ins Arm height 33ins
Weight 11lbs
Assembly required



Aura Counter Height Stool

1AUMS W 20 H 25 D 17 ins
Weight 9lbs



Aura High Dining Aluminium Table 140 Rectangular

2AUAH14 L 55 W 28 H 41 ins
Clearance 39ins
Weight 53lbs Seats 4
Assembly required Parasol hole

Additional products

400917 Aura table cover
400909 Aura table & 4 chairs cover



Aura High Dining Aluminium Table 200 Rectangular

2AUAH20 L 79 W 28 H 41 ins
Clearance 39ins
Weight 62lbs Seats 6
Assembly required Parasol hole

Additional products

400919 Aura High Dining cover





Aura 140 Counter Height Aluminium Table

2AUAM14.+ L 55 W 28 H 36 ins
Clearance 33 1/4ins
Weight 62lbs Seats 4
Assembly required Parasol hole

Additional products
400916 Aura Counter Height table cover



Aura 200 Counter Height Aluminium Table

2AUAM20.+ L 79 W 28 H 36 ins
Clearance 33 1/4ins
Weight 57lbs Seats 6
Assembly required Parasol hole

Additional products
400910 Aura Counter Height table cover



Aura High Dining Table 140 Rectangular

2AUH14.+ L 55 W 28 H 41 ins
Clearance 39ins
Weight 53lbs Seats 4
Assembly required

Additional products
400917 Aura table cover
400909 Aura table & 4 chairs cover



Aura High Dining Table 200 Rectangular

2AUH20.+ L 79 W 28 H 41 ins
Clearance 39ins
Weight 68lbs Seats 6
Assembly required Parasol hole

Additional products
400919 Aura High Dining cover



Aura Counter Table 140

2AUM14.+ L 55 W 28 H 36 ins
Weight 49lbs Seats 4
Assembly required Parasol hole

Additional products
400916 Aura Counter height table cover
400910 Aura Counter height table & 4 chairs cover



Aura Counter Table 200

2AUM20.+ L 79 W 28 H 36 ins
Weight 57lbs Seats 6
Assembly required Parasol hole

Additional products
400918 Aura Counter table cover



Frame options ■ Graphite .01 ■ Arctic White .02 ■ Champagne .04



Aura Deep Seating

Aluminium

Aura Deep Seating

Aura is ultra-modern simple modular deep seating available in three attractive colourways. The frame is powder-coated aluminium with the padded back and arms upholstered in Textilene. Available as one, two or three-seater modules makes possible any seating configuration you require.



Aura Deep Seating Armchair

1AUDMA.++. W 41 H 34 D 35 ins
 Seat height 17ins Arm height 29ins
 Weight 69lbs
 Assembly required
 800205 Aura cushion

Additional products
 400106 Aura Deep Seating cover



Aura Deep Seating Ottoman

1AUDMO.++. W 41 H 17 D 35 ins
 Weight 27.5lbs
 Assembly required
 800200 Aura Ottoman cushion

Additional products
 400105 Aura Deep Seating cover



Aura Deep Seating Two-seater Settee

1AUDM2.++. L 70 H 34 D 35 ins
 Seat height 17ins Arm height 29ins
 Weight 99lbs
 Assembly required
 800205 x2 Aura cushion

Additional products
 400107 Aura Deep Seating cover



Frame options ■ Graphite_.01 ■ Arctic White_.02 ■ Champagne_.04



Aura Deep Seating Three-seater Settee and Aura Deep Seating Two-seater Settee



Aura Deep Seating Armchairs in Arctic White, Champagne and Graphite



Aura Deep Seating Three-seater Settee

1AUDM3.+ L 106 H 34 D 35 ins
 Seat height 17ins Arm height 29ins
 Weight 126lbs
 Assembly required
 800205 x3 Aura cushion

Additional products
 400108 Aura Deep Seating cover



Aura Deep Seating Five-seater Corner Settee

1AUDM23.+ L 106 W 106 H 34 D 35 ins
 Seat height 17ins Arm height 29ins
 Weight 224lbs
 Assembly required
 800201 x2 Aura intermediate width cushion
 800205 x2 Aura cushion
 800207 Aura corner cushion



Frame options ■ Graphite .01 ■ Arctic White .02 ■ Champagne .04



Aura Deep Seating Six-seater Corner Settee

1AUDM33.+ L 142 W 106 H 34 D 35 ins
 Seat height 17ins Arm height 29ins
 Weight 257lbs
 Assembly required
 800201 x3 Aura intermediate width cushion
 800205 x2 Aura cushion
 800207 Aura corner cushion



Aura Adjustable Height Table 140

2AULA14.+ L 55 W 28 H 20 to 27 ins
 Weight 57lbs
 Parasol hole

Additional products
 400915 Aura Deep Seating cover

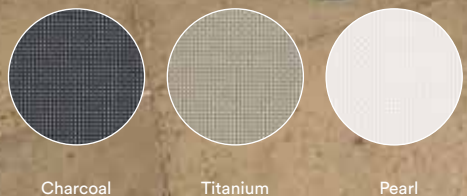


Aura Occasional

Aura Lounge Chair, Aura Ottoman and Aura Three Seater Settee with Graphite Frame and Charcoal sling, seat and back cushions in Lead Chine with optional scatter cushions in Adriatic Blue, Aura Low Table 120, Woodland Screen - Portrait and Landscape with Martinique Screen Curtains



Sling options
More information on page 188



Charcoal Titanium Pearl

Aluminium

Aura Occasional

Created to complete the successful Aura Deep Seating and Dining ranges, the Aura Occasional collection offers contemporary, sleek, comfortable seating, ideal for the urban environment and roof terraces.

Frame options ■ Graphite .01 ■ Arctic White .02 ■ Champagne .04 ■ Charcoal .500 ■ Titanium .502 ■ Platinum .504 ■ Pearl .505



Aura Club Chair

1AUDA.++ W 27 H 34 D 31 ins
Seat height 17ins Arm height 24ins
Weight 11lbs



Aura Lounger

1AUL.++ L 79 W 28 H 41 ins
Seat height 14ins Arm height 20ins
Weight 29lbs
Stackable

Additional products

400733 Aura Lounger cover



Aura Footstool

1AUF.S.++ L 22 W 22 H 16 ins
Weight 7lbs



Aura Lounge Three-seater Settee

1AUL3.++ L 29 ¾ W 72 ½ H 32 ¾ ins
Seat height 17ins Arm height 24ins
Weight 37lbs
Assembly required
800121 x3 Aura Lounge cushion



Aura Lounge Chair

1AULC.++ W 28 H 33 D 33 ins
Seat height 17ins Arm height 24ins
Weight 20lbs
Assembly required
800121 Aura Lounge cushion



Aura Lounge Ottoman

1AULO.++ L 20 W 24 ½ H 15
Weight 9lbs
800122 Aura Lounge Ottoman cushion





Aura Lounge Chair and Aura Three Seater Settee with Graphite Frame and Charcoal sling, seat and back cushions in Lead Chine with optional Scatter cushions in Adriatic Blue, Aura Low Table 120, Woodland Screen - Portrait and Landscape with Martinique Screen Curtains



Aura Lounger with Champagne frame and Titanium sling and Aura Low Table 50 with Arctic White frame



Aura Low Table 50

2AUL05.+ L 20 W 17 H 16 ins
Weight 11lbs



Aura Low Table 60

2AUL06.+ L 26 W 26 H 16 ins
Weight 22lbs
Assembly required



Aura Side Table 60

2AUS06.+ L 26 W 26 H 23 ins
Weight 25lbs
Assembly required



Aura Low Table 120

2AUL12.+ L 47 W 26 H 16 ins
Weight 33lbs
Assembly required

Additional products
400114 Aura Occasional cover



Aura Low Table 160

2AUL16.+ L 63 W 26 H 16 ins
Weight 40lbs
Assembly required



Frame options ■ Graphite .01 ■ Arctic White .02 ■ Champagne .04 ■ Sling options ● Charcoal .500 ● Titanium .502 ● Pearl .505



Aura Planter 38 with teak edging

3AUP38.01 L 15 W 15 H 13 ins
Weight 13lbs



Aura Planter 50 with teak edging

3AUP50.01 L 20 W 20 H 17 ins
Weight 20lbs



Aura Planter 65 with teak edging

3AUP65.01 L 26 W 26 H 22 ins
Weight 31lbs
Stackable



Aura Planter 28 x 100 with teak edging

3AUP100R.01 L 39 W 11 H 10 ins
Weight 18lbs



Aura Planter Stand 28 x 100

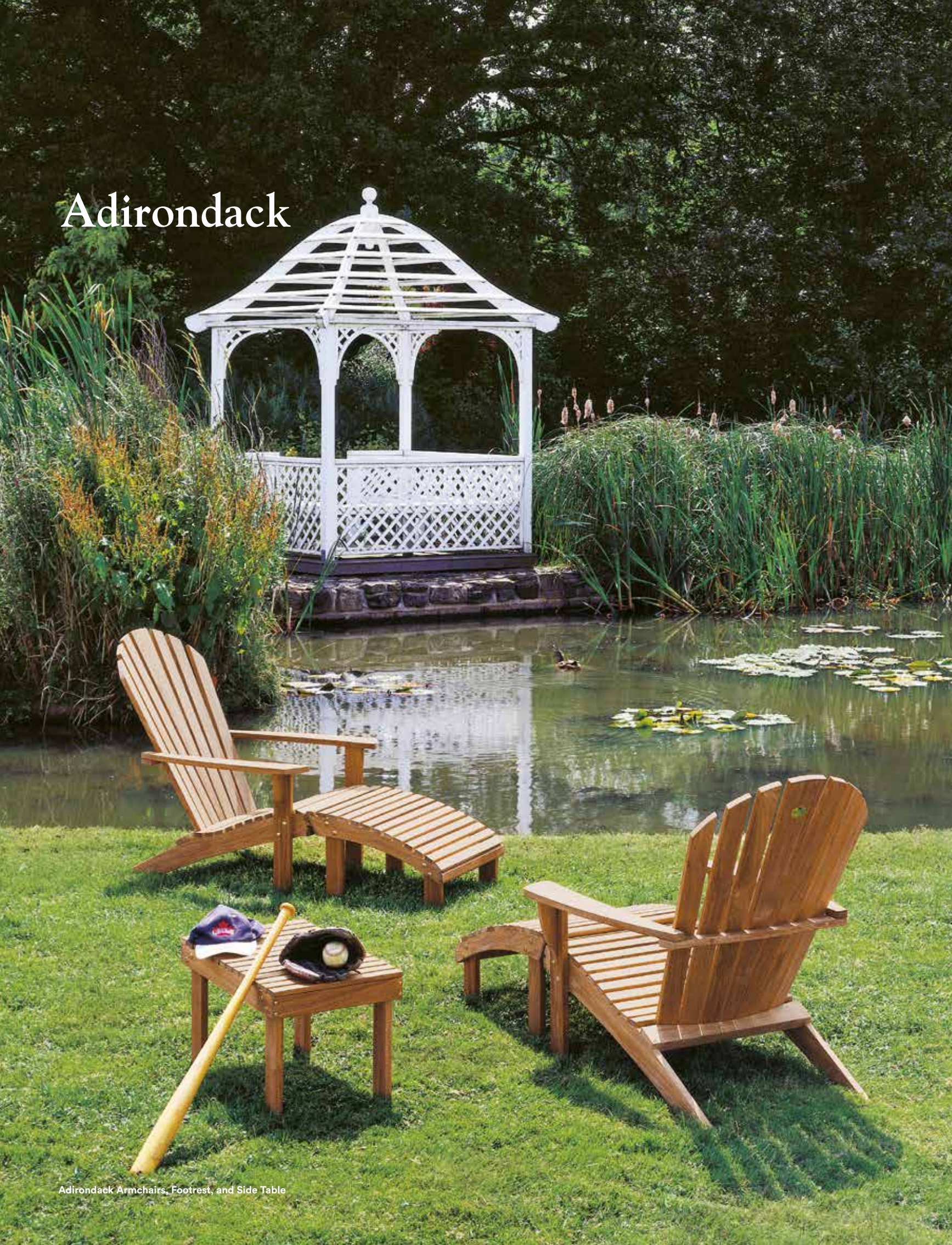
3AUP100RF.01 L 40 W 12 H 21 ins
Weight 9lbs
Assembly required



Heritage

14 Collections 7 international design awards

Adirondack



Adirondack Armchairs, Footrest, and Side Table

A classic American design originating from the Adirondack mountain region of New York State that combines a rustic charm with comfort.

Adirondack Armchair

1ADA	W 30 H 37 D 38 ins
	Seat height 14ins Arm height 20ins
	Weight 37lbs
	Assembly required

Additional products



Adirondack Footrest

1ADFR	W 21 H 14 D 22 ins
	Weight 13lbs
	Assembly required



Adirondack Side Table 62

2AD	L 24 W 16 H 15 ins
	Weight 13lbs
	Assembly required

Arundel

Based on one of Barlow Tyrie's original designs from the 1920s, this classic teak dining table extends to seat up to 10 people.



Arundel Extending Table 285

2ARX28 L 80-113 W 43 H 28 ins
 Clearance 23ins
 Weight 165lbs Seats 8 to 10
 Assembly required Parasol hole

Additional products

400766 Arundel 79in table cover (closed)
 and 6-8 Chairs

Colchester

Our square Colchester Side and Low tables offer a simple design with sturdy quality, complementing any grouping of our traditional teak outdoor furniture.



Colchester Side Table 54

2COH L 22 W 22 H 22 ins
 Weight 20lbs
 Assembly required



Colchester Low Table 54

2COL L 22 W 22 H 16 ins
 Weight 18lbs
 Assembly required

Commodore

Improving on the design of the classic transatlantic steamer chair, the Commodore won a design award when we first manufactured it, and it has been extensively copied since. The Commodore offers high levels of comfort and the best materials available, including special fittings cast exclusively for us in solid brass.



Commodore Steamer

1CO	L 57 W 25 H 39 ins Seat height 14ins Arm height 23ins Weight 40lbs Folding
-----	---

Additional products

800066	Commodore Steamer cushion
1WH	Commodore Wheels (pair)

Felsted

A medium-weight traditional design that features curved arms and a shaped seat for added comfort.



Felsted Armchair

1FEA	W 22 H 34 D 24 ins Seat height 16ins Arm height 24ins Weight 26lbs Assembly required
------	---

Additional products

800001	Felsted Armchair cushion
--------	--------------------------



Felsted Seat 150

1FE15	L 58 H 34 D 24 ins Seat height 16ins Arm height 24ins Weight 42lbs Assembly required
-------	---

Additional products

800015	Felsted Seat 150 cushion
--------	--------------------------

Glenham

Solid teak, robust and long-lasting, Glenham is an original Barlow Tyrie design of traditional, heavy-weight seating, including some more unusual items for use in larger gardens and landscaping projects.



Glenham Junior Armchair

1GLJA W 17 H 26 D 18 ins
 Seat height 12ins Arm height 18ins
 Weight 15lbs
 Assembly required



Glenham Armchair

1GLA W 23 H 35 D 25 ins
 Seat height 16ins Arm height 25ins
 Weight 35lbs
 Assembly required

Additional products
 800001 Glenham Armchair cushion



Glenham Seat 150

1GL15 L 59 H 35 D 25 ins
 Seat height 16ins Arm height 25ins
 Weight 57lbs
 Assembly required

Additional products
 800015 Glenham Seat 150 cushion



Glenham Seat 180

1GL18 L 71 H 35 D 25 ins
 Seat height 16ins Arm height 25ins
 Weight 73lbs
 Assembly required

Additional products
 800018 Glenham Seat 180 cushion
 Water repellent cushion



Glenham Seat 240

1GL24 L 93 H 35 D 25 ins
 Seat height 16ins Arm height 25ins
 Weight 95lbs

Additional products
 800055 Glenham Seat 240 cushion
 Water repellent cushion



Glenham Curved Seat 285 Radius

1GLR28 L 88 H 35 D 25 ins
 Seat height 16ins Arm height 25ins
 Weight 79lbs



Glenham Curved Seat 285



Glenham Circular Tree Seat (Sold as halves)

1GLSC Ø 87 H 35 ins
 Internal Ø 39ins
 Seat height 16ins
 Weight 101lbs

London

London is an original Barlow Tyrie design classic from the 1920s featuring robust construction with a wide flat arm, which is perfect for resting a drink or book. London is suitable for public spaces and private gardens. Both the armchair and seat can be carved with an inscription or fitted with a weatherproof bronze plaque.



London Armchair

1LOA W 27 H 35 D 25 ins
 Seat height 16ins Arm height 26ins
 Weight 37lbs
 Assembly required

Additional products
 800001 London Armchair cushion



London Seat 150

1LO15 L 63 H 35 D 25 ins
 Seat height 16ins Arm height 26ins
 Weight 57lbs
 Assembly required

Additional products
 800015 London Seat 150 cushion



London Seat 180

1LO18 L 75 H 35 D 25 ins
 Seat height 16ins Arm height 26ins
 Weight 71lbs
 Assembly required

Additional products
 800018 London Seat 180 cushion



A Chelsea Pensioner on a London Seat Venus Fountain, Sloane Square, London C. 1955

Newport



Newport Rocking Chairs, Colchester
Low Table 54 and London Seat

A traditionally styled rocker with generous dimensions that features a contoured seat and backrest, heavily shaped arms and a smooth rocking action. One of the most comfortable rocking chairs you will find.



Newport Rocking Chair

1NER	W 25 H 41 D 35 ins Seat height 17ins Arm height 27ins Weight 29lbs Assembly required
------	---

Additional products

800002	Full seat and back cushion
800003	Seat cushion only

Reims

The opulent, insulated Reims chest is designed with room for a case of Champagne plus the appropriate amount of ice – other refreshments are welcome too.



Reims Refreshment Chest

3RE L 32 W 23 H 24 ins
Weight 77lbs

Additional products
400774 Cover

Rothesay

The Rothesay is the heaviest of our seats, designed with generous proportions that make an impressive statement. Suitable for large gardens, streets, and commemorative locations, the rails can be carved with a message or fitted with a weatherproof bronze plaque.



Rothesay Estate Chair

1ROA L 28 H 35 D 26 ins
Seat height 16ins Arm height 27ins
Weight 53lbs
Assembly required

Additional Products
800054 Cushion



Rothesay Seat 180

1RO18 L 72 H 35 D 26 ins
Seat height 16ins Arm height 27ins
Weight 82lbs
Assembly required

Additional products
800052 Rothesay Seat 180 cushion



Rothesay Seat 240

1RO24 L 94 H 35 D 26 ins
Seat height 16ins Arm height 27ins
Weight 112lbs

Additional products
800053 Rothesay Seat 240 cushion

Sissinghurst

The ornate Sissinghurst seat is based on a design by the eminent architect Sir Edwin Lutyens. A true classic in the 'English Garden Tradition'.



Sissinghurst Seat 195

1SI W 77 H 42 D 23 ins
 Seat height 18ins Arm height 29ins
 Weight 84lbs

Additional products

800065 Sissinghurst Seat 195 cushion

Waveney

The Waveney seat is an award-winning design with beautiful turned front legs, shaped arms and an arched back, for a traditional form.



Waveney Seat 120

1WA12 L 46 H 34 D 23 ins
 Seat height 16ins Arm height 24ins
 Weight 33lbs
 Assembly required

Additional products

800012 Waveney Seat 120 cushion



Parasols

1 Collection

Napoli Cantilever Parasol 4m Monterey
Table 200 with Oxide ceramic top
Monterey Teak Armchairs

Napoli



Napoli Parasol 2.8 with tilt action and canvas canopy

Napoli parasols provide stylish, robust and simple-to-operate shade from the sun. Our parasols are engineered to function easily - to tilt, pivot or with a telescopic mechanism that allows our larger parasols to close over a dining table. The parasol struts are made from eucalyptus with a matte urethane finish, accented with either nickel-plated, solid brass or stainless steel fittings and complete with a storage cover.

Our parasol fabric is made from Sunbrella® 100% solution-dyed, Teflon®-coated acrylic yarn that helps to disperse water.

All parasols must be used with a base for safety, even when placed through a table. Bases are available as either a standard, freestanding, floor-fixing or in-ground version, which you need to order separately.



Napoli Parasol 2.8 Mtr - Ø 38mm pole

4NA28C.302 Ø 111 H 98 ins
Weight 22lbs
Includes storage cover
Tilt mechanism



Napoli Parasol 3 Mtr - Ø61mm pole

4NA30S.302 W 118 H 106 ins
Weight 49lbs
Includes storage cover
Telescopic mechanism



Napoli Parasol 3.5 Mtr - Ø 61mm pole

4NA35C.302 Ø 138 H 106 ins
Weight 48lbs
Includes storage cover
Telescopic mechanism



Napoli Parasol 3.5 x 2.5 Mtr - Ø61mm pole

4NA35R.302 L 140 W 100 H 106 ins
Weight 49lbs
Includes storage cover
Telescopic mechanism



Napoli Parasol 4 Mtr - Ø 61mm pole

4NA40C.302 Ø 159 H 106 ins
Weight 49lbs
Includes storage cover
Telescopic mechanism



Napoli Cantilever Parasol - 3.5 Mtr

4NAC35S.302 L 138 W 138 H 121 ins
Clearance 91ins
Weight 119lbs
Assembly required
Includes storage cover

Tilts and Rotates through 360 degrees to follow the sun.
A base is required, of which there are two types, detailed on page 178.



Napoli Cantilever Parasol - 4 Mtr

4NAC40S.302 L 157 W 157 H 124 ins
Clearance 91ins
Weight 141lbs
Assembly required
Includes storage cover

Tilts and Rotates through 360 degrees to follow the sun.
A base is required, of which there are two types, detailed on page 178.

Bases & Accessories



Parasol Standard Base 61 (2 1/2ins) - Large

4PBL L 24 W 24 H 17 ins
Weight 64lbs
Assembly required



Parasol Standard Base 38

4PBS L 24 W 24 H 16 ins
Weight 51lbs
Assembly required



Parasol Standard Base 61 High Dining

4PBLH L 24 W 24 H 30 ins
Weight 66lbs
Assembly required



Parasol Freestanding Base 61

4PBFL L 29 W 16 H 17 ins
Weight 104lbs
Assembly required



Parasol Freestanding Base 38 (1 1/2ins) - Small

4PBFS L 29 W 16 H 16 ins
Weight 99lbs
Assembly required



Parasol Freestanding Base 61 High Dining

4PBFLH L 74 W 74 H 75 cm
Weight 48kg
Assembly required



Parasol Floor Fixing Base 61 (2 1/2ins) - Large

4PBFFL L 12 W 12 H 17 ins
Weight 18lbs
Assembly required



Parasol Floor Fixing Base 38 (1 1/2ins) - Small

4PBFFS L 12 W 12 H 17 ins
Weight 15lbs
Assembly required



Parasol Floor Fixing Base 61 (2 1/2ins) - Large High Dining

4PBFFLH L 12 W 12 H 30 ins
Weight 20lbs
Assembly required



**Parasol In-ground Base
61 (2 1/2ins) - Large**

4PBUL L 4 W 4 H 35 D 19 ins
Weight 13lbs
Assembly required



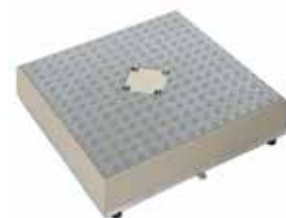
**Parasol In-ground Base
38 (1 1/2ins) - Small**

4PBUS L 4 W 4 H 34 D 19 ins
Weight 11lbs
Assembly required



**Parasol In-ground Base
61 (2 1/2ins) - Large High Dining**

4PBULH L 4 W 4 H 48 D 19 ins
Weight 15lbs
Assembly required



**Napoli Cantilever Parasol
Freestanding Base**

4PBFC.04 W 38 H 3 D 38 ins
Weight 84lbs
Assembly required
Includes rubber mat

Please contact uksales@teak.com for more information.
Requires weighting with 12 paving slabs 45 cm x 45 cm x 3 cm, which are not included.
Please contact uksales@teak.com for more information.



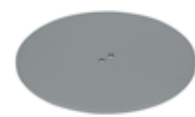
**Napoli Cantilever Parasol
In-ground Base**

4PBUC.04 L 66 ins
Weight 24lbs
Assembly required



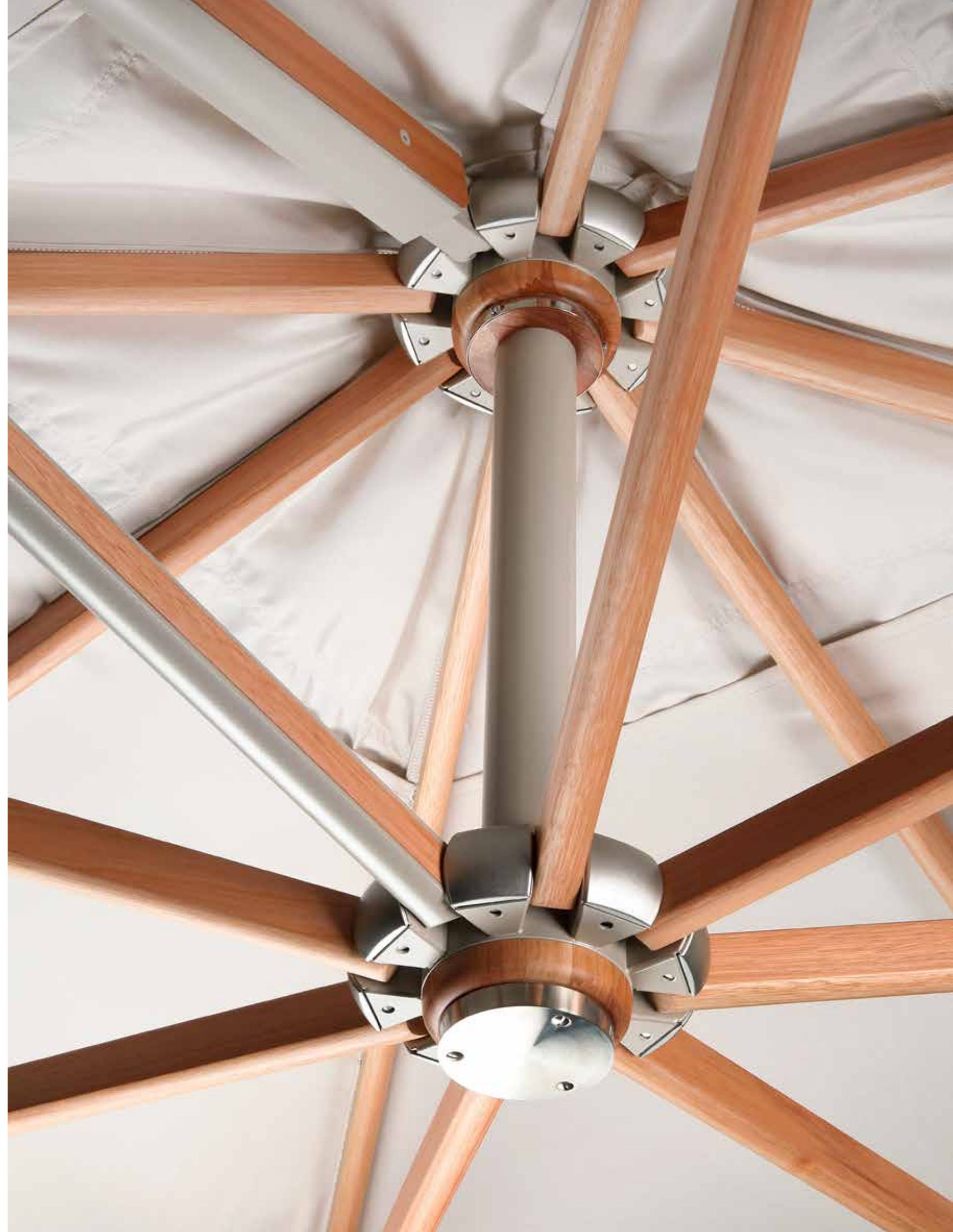
Parasol Pedestal Base 23 - Large

4PBPL Ø 23ins
Weight 49lbs



Parasol Pedestal Base 15 - Small

4PBPS Ø 15ins
Weight 24lbs



Blanking Caps and Reducer Rings

A blanking cap fills the parasol hole in your table when used without a parasol. A reducer ring reduces movement of a parasol pole in a table top. The pole diameter of your parasol determines the correct size to use.



Table Blanking Cap - Brass

4PR.00 Ø 3ins
Weight 0.55lbs



Table Reducer Ring - Small 1 1/2ins Brass

4PR.38 To fit 1 1/2ins parasol pole
Ø 3ins
Weight 0.33lbs



Table Reducer Ring - Large 2 1/2ins Brass

4PR.61 To fit 2 1/2ins parasol pole
Ø 3ins
Weight 0.22lbs

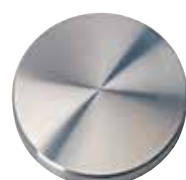


Table Blanking Cap - Stainless Steel

4PRSS.00 Ø 3ins
Weight 0.55lbs



Table Reducer Ring - Small 1 1/2ins Stainless Steel

4PRSS.38 To fit 1 1/2ins parasol pole
Ø 3ins
Weight 0.33lbs



Table Reducer Ring - Large 2 1/2ins Stainless Steel

4PRSS.61 To fit 2 1/2ins parasol pole
Ø 3ins
Weight 0.22lbs

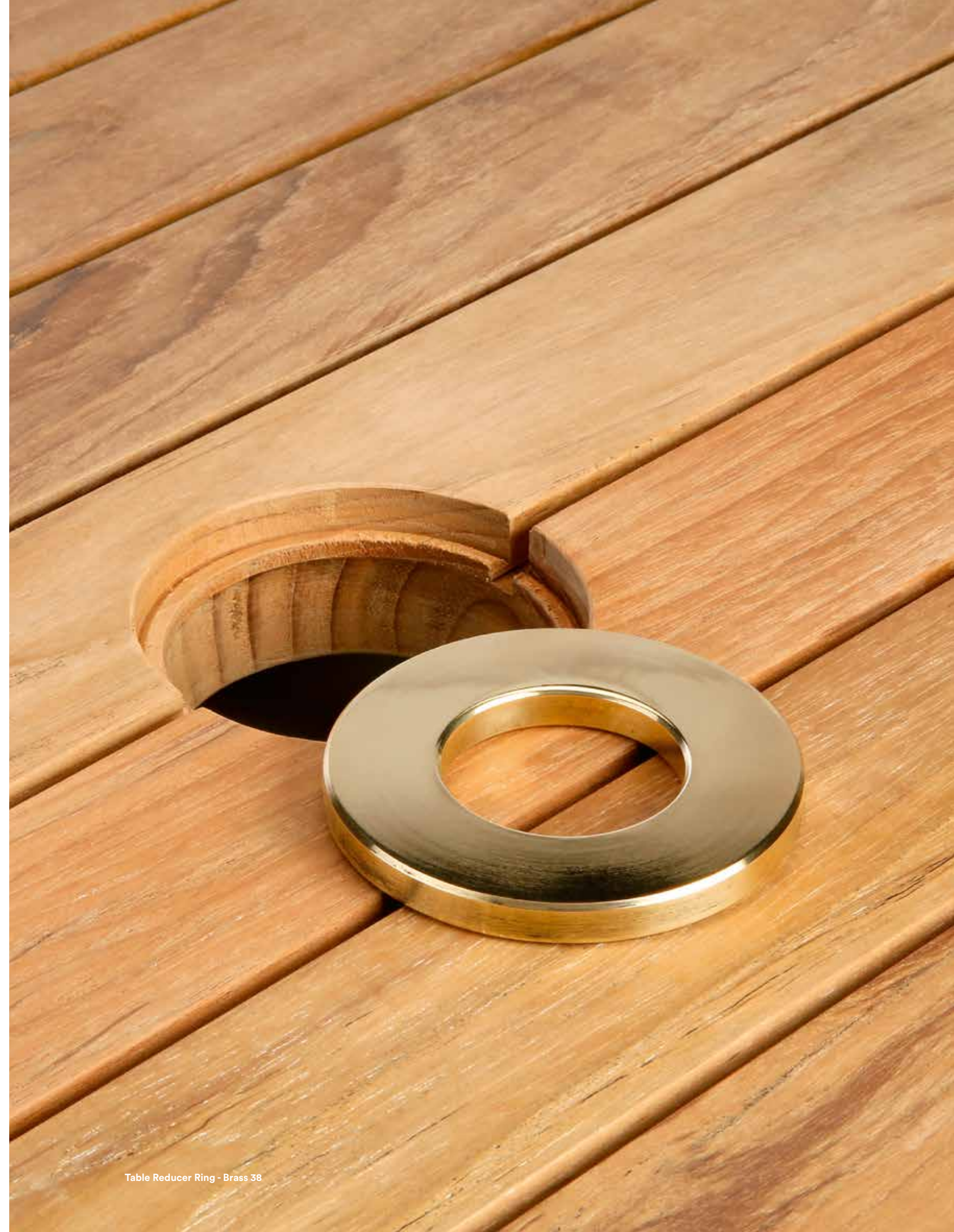


Table Reducer Ring - Brass 38

Materials & Accessories

Cushions

Our cushions are manufactured using Sunbrella®, a colourfast fabric that is made from a durable, all-weather, 100% solutiondyed Teflon® coated acrylic fibre. This fabric repels water, but cushions should not be left out in heavy rain for prolonged periods. If cushions do become saturated, place them on edge until dry.

Fabrics are available in Sunbrella Rain® fabric. Rain® fabric has an additional barrier that makes the fabric waterproof and the surface of the cushion quick drying. Please note that although the fabric is waterproof, zips and venting will allow ambient moisture from the atmosphere to enter the cushion. Please do not store cushions until dry. There is an additional charge for cushions in Sunbrella® Rain® fabric.

Ordering cushions

When ordering cushions, please suffix the fabric colour code to the cushion code. For stock colours outside the USA please see our current selection opposite. If the waterproof Sunbrella® Rain® option is required, please add a 'V' to the fabric code, e.g. Natural = 5405 V.

Sunbrella® features:

- The unique formula of Sunbrella® fabric together with their high production standards make the fabric easy to clean and fade resistant
- Please note that standard stock colours may not apply to the USA stockists. Due to the vast choice available from Sunbrella® fabrics, we bespoke manufacture our cushions and pillows to order
- In the USA, selected Sunbrella® Rain® fabrics are available as an option
- Please note when ordering cushions in

USA – the fabric name, colour and/or fabric code used are sometimes different

- Note: Sunbrella® Taupe cushion colour has two different codes, in the European Collection 3729 which is fire retardant and in the North America Collection 5461 V is available as Rain® V77 fabric

Cushion covers are designed to provide maximum weather protection with comfort and breath-ability.

Optional waterproofing for your cushions

When ordering cushions, please suffix your fabric code to the cushion code. If the waterproof option is required, please add (V) to the fabric code, e.g. 5404-V Natural. There is an additional charge for Rain® barrier finish fabrics. If you require help in choosing your cushions then please telephone or email your enquiry – please see our website for contact details. www.teak.com

How do I clean cushions?

One of the best ways to keep your cushions looking good and to minimise the need for deep or vigorous cleaning is to properly maintain the fabric. You can do this by brushing off dirt before it becomes embedded in the fabric and, wiping or spot cleaning spills as soon as they occur. A stain repellent may be applied to the fabric. A comprehensive guide to cleaning various spills is available on the Sunbrella® website.

After cleaning cushion and parasol fabric we recommend the use of 'Barlow Tyrie Fabric Weather Guard' (4FWG). It is easier to leave the cushion covers on

during the cleaning process. Cushions that are cleaned before storage will be ready and waiting for the sun to shine. Please do not store cushions until fully dry.

Layout Double Lounger with Arctic White frame and Carbon Beige cushions, Layout Narrow Low Table 160 with Arctic White frame and teak top and Woodland Screen - Landscape

The design of the Monterey headrest (right) is different in the USA. Please contact your local retailer for more details.

For cushion colours please check the fold out swatch on the inside back cover

Monterey Deep Seating Armchair with optional cushion in Frosty Chiné



Napoli Cantilever Parasol 4m, Haven
Deep Seating Settee set with Heather
Beige seat and back cushions and
Natural scatter cushions

Fabric & Cord

Sling and Curtain

Sling is the fabric seat and back on our seats and loungers, for which we use the following three materials. We can supply replacement slings for current and some discontinued products. Contact our customer service with the model of your furniture to enquire. An optional curtain is available for use with our Woodland Screen to provide extra seclusion and protection from the elements.

Textilene®: colours available are Charcoal .500, Titanium .502, Platinum .504, Pearl .505, Martinique .509 (Woodland Screen Curtain only).

Collections featuring these options are Aura, Cocoon, Equinox (non-powder coated), Horizon, Mercury (non-powder coated), Monterey and Woodland.

Focusing on subtle patterns that read as textures, Textilene® achieves an elevated indoor aesthetic in an outdoor setting and guarantees that our slings are strong, durable, mildew resistant, and require the minimum of maintenance. After rain, a light tap and any water simply drops off.

Sunbrella® woven fabric: colours available are Carbon .513 and Seagull .512.

Collections featuring these options are Equinox powder coated and Mercury powder coated.

We use this fabric for extra luxury. Blending the strength of PVC with the softness of Sunbrella® acrylic yarn for added comfort.

Sunbrella® awning fabric: colours available are Forest Green .200, White Sand .201 and Pepper .204.

Safari is the only collection which features this option. This fabric is heavy duty, colour fast and weather resistant.

Jacquatex®: colour available is Ivory .601.

The Woodland Screen Curtain is the only product that features this fabric. This fabric is made from polyester yarn which is hard wearing and durable.

Canopy

Canopy is the fabric cover on our parasols. We can supply a replacement canopy for our current and some discontinued parasols. Contact our customer service with the parasol model to enquire.

Sunbrella® canopy: colour available is Canvas .302.

All our Napoli standard and cantilever parasols feature this fabric. This fabric is a durable, 100% solution-dyed acrylic. The fabric colour is locked deep inside the yarn and has excellent resistance to the fading often caused by sunlight and cleaning.

All-Weather Cord

All-weather cord is the decorative webbing we use to give an attractive and innovative finish. All-weather cord is strong, colour fast and with a soft handle. Several hundred feet of cord are used in each product.

Olefin All-Weather Cord: colours available are Brown .400 and Chalk .401.

Collections featuring these options are Cocoon (Chalk .401 only) and Monterey.

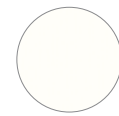
Care and maintenance of sling, canopy and cord fabrics.

All these materials are suitable for outdoor use and require minimal maintenance. To keep them in optimum condition we recommend you use Barlow Tyrie Woven & Sling Non-Foam Cleaner (4WTC).



Forest Green

.200 Safari® only



White Sand

.201 Safari® only



Pepper

.204 Safari® only



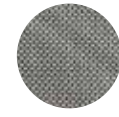
Charcoal

.500



Titanium

.502



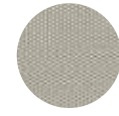
Platinum

.504



Pearl

.505



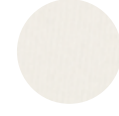
Seagull

.512 Equinox & Mercury only



Carbon

.513 Equinox, Mercury and Woodland Screen Curtain



Canvas

.302 Napoli Parasols only



Martinique

.509 Woodland Screen Curtain only



Ivory

.601 Woodland Screen Curtain only



Brown

.400 Monterey only



Chalk

.401 Cocoon & Monterey only

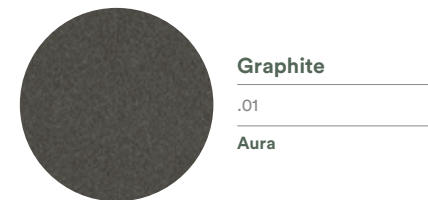


Monterey Armchairs with Brown cord
Colchester Low Table 54



Equinox Dining Armchair with Platinum Sling

Powder Coated Frames



Graphite

.01

Aura



Arctic White

.02

Aura, Layout



Grey

.03

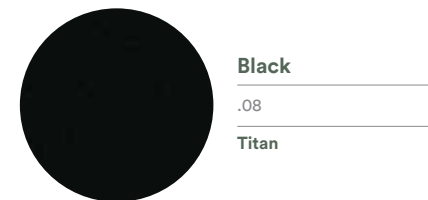
Parasol bases



Champagne

.04

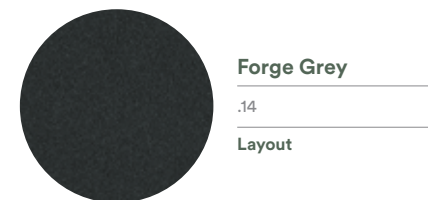
Aura



Black

.08

Titan



Forge Grey

.14

Layout

Furniture collections featuring this option - Aura, Equinox, Layout, Mercury, Monterey and Titan.

Alongside our standard stainless steel frames, we offer a powder coated frame option. This gives a stunning visual effect. We use an environmentally-friendly process to clean and etch the aluminium and stainless steel before applying a high-quality oven-fired powder coating. Refer to sample images to the left which indicate which collections are available in each colour option.

Non-furniture items featuring this option include parasol bases. All our parasol bases come powder coated as standard in Grey .03. The Napoli Cantilever Parasol Freestanding Base is powder coated (4PBFC.04) and is available only in Champagne .04

Care and maintenance

It is important that the finish is cleaned regularly using a solution of mild detergent in warm water to retain the aesthetic qualities and the expected long life. Surfaces should be cleaned using a soft cloth, sponge or a natural bristle brush, avoiding abrasive materials that may damage the finish. The frequency of cleaning depends upon the environment in which the products are placed but as a general guide an annual clean will suffice in most urban environments. In environments with high pollution, such as marine and swimming pools, cleaning should be more frequent.

Optional purchase - Frame touch-up paint

Touch-up paints are available to repair any damage that might occur during its lifetime of domestic use. Localised damage to powder coated finishes can generally be successfully repaired. The exact technique depends on the nature and extent of the damage. Powder-coat is a “dry” baked on finish, not a “wet” applied paint, therefore, our “wet” touch-up paints do not exactly match the original colour. See colour options available below. Contact your local Barlow Tyrie stockist to place an order.

- 7TUP.01 “Graphite” touch-up paint – 12ml.
- 7TUP.02 “Arctic White” touch-up paint – 12ml.
- 7TUP.04 “Champagne” touch-up paint – 12ml.
- 7TUP.08 “Black” touch-up paint – 12ml.
- 7TUP.14 “Forge Grey” touch-up paint – 12ml.



Equinox Armchairs with Arctic White frame and Seagull sling and Equinox Pedestal Table 70 with Arctic White frame and Dusk Ceramic top



Layout Bench 130 with Forge Grey frame and teak seat

Tops - Ceramic and Glass



Oxide

.805

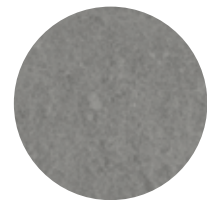
Mercury Low Table 76,
Monterey



Frost

.806

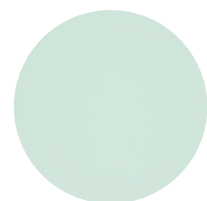
Equinox and Monterey



Dusk

.808

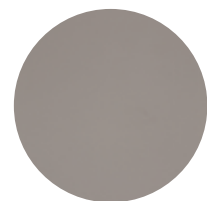
Equinox (powder coated)



Sea Ice

.604

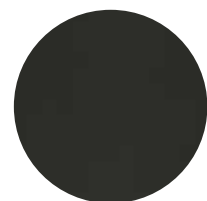
Mercury only



Platinum

.605

Mercury only



Charcoal

.606

Mercury only

In addition to teak tops, we offer options in Ceramic and Glass. With several colour options to suit your taste.

Ceramic

Equinox, Mercury (Low Table 76 and Serving Table) and Monterey are made from 'high-fired' ceramic. Made in Italy, by Laminam, who are experts with superior surface materials. Refer to sample images to the left, which indicate the collections available in each colour option.

Mercury Serving Table

The Mercury serving table (2MEMS) comes with a ceramic top, available in Oxide .805, Frost .806 and Dusk .808. Please state your colour preference when ordering.

Features

- Scratch-proof, UV and weather-resistant (including frost and snow). Ideal for outdoor use.
- Exceptionally resistant to breakage.
- Non-porous, naturally anti-bacterial and hygienic

An innovative material

Manufactured using advanced techniques, the Laminam sheets combine a reduced thickness with a large size. All the features and chromatic properties of the sheets are unalterable and unchanged over time. Ceramic sheets have a thick single layer with a fibreglass mesh backing designed to ensure surface evenness. This ceramic is often referred to as 'high-fired' due to the fact it is baked/fired in an electric kiln at exceptionally high temperatures (around 1220°C / over 2000°F) to produce a porcelain product that has a high surface strength. The process used involves compacting and forming a solid mass of material by heat. These fine sheets are

then cut, profiled, and polished by hand to give a smooth soft edge. The ceramic sheets we use are very large, which makes them ideal for a large one-piece table top. In addition to being functional this ceramic has a lot of design detail. A revolutionary product, respectful of the environment: natural raw materials, sustainable technology and entirely recyclable are the basis of Laminam's green policy.

Care and Maintenance

Ceramic tops are very low maintenance. We recommend you wipe clean using soapy water and a sponge as and when needed. No annual sealing is required.

Glass

Mercury dining tables

We make Mercury Dining Tables from acid-etched tempered glass with a matt finish.

Glass top: colours available are 604 Sea Ice, .605 Platinum and .606 Charcoal.

Features

- Minimal care and maintenance.
- Strong and highly resistant to the outdoor environment.
- Tempered glass is a type of safety glass processed by controlled thermal or chemical treatments to increase its strength compared with normal glass.

Care and Maintenance

We recommend you wipe clean using soapy water and a sponge as and when needed.



Monterey Table 100
with Frost Ceramic top



Monterey Table 100 with Oxide Ceramic top
and Monterey Teak Armchairs

Inscriptions and Plaques

We offer two options to personalise your furniture; a carved inscription or a Bronze Plaque, which are available for most of our teak armchairs, benches and seats. These inscriptions personalise a gift to a loved one or provide a special and distinctive memorial. Contact our customer service department with your requirements or with any questions.

Carved Inscription service

Add a personal message or the name of a loved one to a piece of our furniture. We normally put the inscription on the top rail of a seat or chair but we can put it on the front rail under the seat or on a table top.

Please include your carved inscription with your furniture order as we carve the inscription before we manufacture the furniture.

If you already own a piece of our furniture and would like to inscribe it then we can carve the component and have a member of our care team visit you and fit the new carved component. Our customer service department will give you a quotation for this service.

Features

- Our 3D-lettering is carved in a traditional serif typeface using a 'V'-cut, which allows the inscription to be read easily from the side as well as from immediately in front, which is an advantage over normal machine cut letters.
- Our standard font is Times New Roman, 2.5cm (1") in height. We can supply inscriptions in other fonts.
- We can supply an inscription in any language, including Chinese and Arabic.
- We can supply a seat with a teak panel in the back, on which we can carve a logo, a club crest or a longer inscription or verse.

Considerations

- If more than one line of text is required, we might need to reduce the height of text depending on the model of seat.
- The maximum number of characters and length of an inscription will depend on the seat model, the seat length, the text height, whether upper or lower case and the font used.

Bronze Plaque

We can supply personalised bronze plaques to fit to any of our furniture. Plaques allow you to be creative with your choice of font or image.

We recess plaques onto new furniture to finish flush with the surface, using a hidden fixing that leaves the visible face of the plaque clear and makes its unauthorised removal difficult. We fill the letters on our bronze plaques with vitreous cream enamel that is weatherproof and makes the inscription an attractive feature and easy to read.

If you already own a piece of our furniture and would like to add a bronze plaque then we can supply one and have a member of our care team visit you and fit it. Our customer service department will give you a quotation for this service.

Features

- We supply as standard a 57mm deep (approx. 2") bronze plaque with 6mm (0.25") block letters (see top image above).
- Plaques can be made to any size with lettering in any font.
- The engraved lettering is filled with vitreous cream enamel that is not affected by an outdoor environment. Soft fillings, often used on plaques sited inside a building are totally unsuitable for use outdoors and should be avoided.



Glenham and Rothersey seats with inscriptions and bronze plaque

Security fastenings

We have two ways to secure your furniture, Seat Fixing Irons and Brass Security Fasteners. If you are unsure which option is best for you then please speak to your dealer.

Seat Fixing Irons

- Are made from Stainless Steel and sold in sets of two.
- Must be cast into a concrete block, which secures the seat permanently, preventing its unauthorised movement or removal.
- Are a good choice for all public places such as parks and cemeteries.
- Require no maintenance or ongoing checks.

Security Fasteners

- Are made from polished brass and sold in sets of four.
- Are designed to secure any piece of wooden furniture in place on a stone or wooden floor.
- Include tamper-proof fixings for use on a stone or wooden floor.
- Include a special screwdriver bit to secure the tamper-proof fixings.
- The item of furniture can be removed when required using the special screwdriver bit.



Stainless Steel Seat Fixing Irons (set of two)

4FI	L 9.4 W 1 ½ ins Weight 2lbs
-----	--------------------------------



Brass Security Fasteners (set of four)

4SF	W 1.9 H 3 ins Weight 1.5lbs
-----	--------------------------------

Rothesay Seat 180 with Stainless Steel Seat Fixing Irons (set of two)



Glenham Seat 150 with Brass Security Fasteners (set of four)



Care products

Teak furniture can be left out all year round. However, as part of a maintenance programme we recommend the use of teak cleaner each spring to prepare your furniture for the season.

If untreated, teak will weather to a soft silver grey patina. If you wish to slow the weathering process and retain the golden teak colour, apply Teak Colour Guard before the weathering process begins. Although stainless steel products are made to withstand the rigours of an outdoor environment, regular care and maintenance is required to preserve the fine appearance of your furniture.

We offer care products for all the furniture we supply, which are easy to

use and very effective. An annual or twice-yearly maintenance regime will be more than adequate in most instances to maintain your furniture in prime condition; however in coastal and chlorinated environments we recommend rinsing your stainless steel furniture with fresh water.

For powder coated furniture we suggest you clean and maintain your furniture with Powder Coated Stainless Steel & Aluminium Cleaner. To keep your Sunbrella® furniture fabrics and Textilene® slings in optimum condition we recommend using Woven & Sling Non-Foam Cleaner. We supply cleaning products with their own applicator pad.



Anti-Wasp Solution

4WS Quantity: 1litre
Anti-Wasp Solution is applied to outdoor furniture to deter wasps from defacing weathered wood.
Not available in the USA

See our "How to..." videos
www.teak.com/furniture/furniture-care/



London Seat 150 - weathered



Fabric Cleaner

4FC Quantity: 1litre
Removes dirt and grease, oil, pollutants and mould from Barlow Tyrie cushions.



Fabric Weather Guard

4FWG Quantity: 1litre
Fabric Weather Guard protects the fabric and slows down the ageing effects of weathering. Supplied with its own special applicator pad.



Teak Oil

4TO Quantity: 500ml
By choosing teak you have selected the finest, most durable material available for outdoor furniture. Teak Oil is the traditional method of retaining the original colour of new teak. Ensure that the wood is completely dry before applying with a brush or cloth. Apply liberally and wipe off the excess with a rag.

Videos: How to Transform Weathered Teak Furniture
How to Clean Teak Garden Furniture



Teak Cleaner

4TC Quantity: 1litre
Teak Cleaner cleans and restores discoloured, dark grey teak. Contains brightener ingredients which will restore your teak to its original colour. Supplied with its own special applicator pad.

Videos: How to Transform Weathered Teak Furniture
How to Clean Teak Garden Furniture



Teak Stain Guard

4TSG Quantity: 1litre
Teak Stain Guard forms an invisible layer to protect your teak from everyday stains such as butter, oil, and red wine making the cleaning of accidental spills an easy task. Supplied with its own special applicator pad.

Videos: How to Transform Weathered Teak Furniture
How to Clean Teak Garden Furniture



Teak Colour Guard

4TCG Quantity: 1litre
Teak Colour Guard helps to maintain the golden brown colour of new teak. Supplied with its own special applicator pad.

Videos: How to Transform Weathered Teak Furniture
How to Clean Teak Garden Furniture



Powder Coated Stainless Steel & Aluminium Cleaner

4AC Quantity: 1litre
Powder Coated Stainless Steel & Aluminium Cleaner easily removes dirt, grease, oil, pollutants, and mould from your furniture. Supplied with its own special applicator pad.

Video: How to Clean Aluminium Outdoor Furniture



Stainless Steel Clean and Guard

4SSCG Quantity: 1litre
Stainless Steel Clean & Guard cleans and leaves a fine layer of Teflon® on the surface to help prevent the build up of contaminants. Supplied with its own special applicator pad.

Video: How to Clean Stainless Steel Outdoor Furniture



Woven & Sling Non-Foam Cleaner

4WTC Quantity: 1litre
Woven & Sling Non-Foam Cleaner is a non-foam agent that maintains woven furniture and Textilene® slings and Sunbrella® fabrics without unsightly residue. Supplied with its own special applicator pad.

Furniture Covers and Storage Bags

We make our furniture covers and storage bags from Weather MAX-LT®, a modified polyester fabric that is the best available for outdoor applications.

Properties

- Superior single layer construction
- Durable and strong
- UV-resistant with long-term colour retention
- High water repellence
- Breathable - allowing trapped moisture to disperse
- Rain and dust are prevented from penetrating
- Lightweight - easy to put on and remove
- A unique fastening ensures a secure fit

Care

The life and good looks of the cover depend a great deal on the way you care for it. Do not store the cover unless it is fully dry, using the storage pouch supplied.

Please note

- Not all covers are custom made so the fit may not be 'made to measure'.
- Covers for standard dining groups are designed to cover the furniture with the chairs not under the table

Helpful hints

If the furniture has any sharp corners or edges, place foam rubber on the sharp edge to reduce the risk of puncture or abrasion of the cover. For table and chair combinations, placing an object, such as a beach ball, under the centre of the cover can help drain water.

Delivery times

Please allow up to 12 weeks for delivery. Contact your Barlow Tyrie stockist for information on availability.

WeatherMax® Covers & Storage Bags

Please see individual furniture products for the relevant optional WeatherMax® furniture covers.

Cushion Storage Bags

400810 Cushion Storage Bag fits 2 standard/ultra lounge cushions

400824 Cushion Storage Bag fits 4 armchair/cushions

400828 Cushion Storage Bag fits 8 armchair/cushions

Frequently Asked Questions

Which materials does Barlow Tyrie use?

We combine the highest quality materials with superior craftsmanship and design to produce our furniture, resulting in worldwide recognition for excellence. We have combined stainless steel with Textilene® or Sunbrella® slings and premium grade teak with an all-weather cord woven from Olefin®. We powder-coat aluminium and stainless steel frames and use synthetic woven materials to produce contemporary furniture to our traditional high standard.

TEAK

What are the properties of teak?

Teak is a deciduous hardwood tree from managed plantations; it does not come from tropical rainforests. Teak has a naturally high oil content, making it stable and resistant to rotting when exposed to climatic extremes. For centuries these unique qualities have made teak the preferred choice for marine decking and construction; hence it is considered the premium timber for outdoor furniture.

Teak wood will naturally weather from golden brown to a silver-grey patina colour.

What is a FLEGT licence?

Our teak products are made of FLEGT-licensed wood from Indonesia. The legality of the wood is assured through Indonesia's national timber legality assurance system, SVLK, a mandatory legality and sustainability certification system, and the FLEGT licensing scheme. FLEGT licences show that a country manages its forests according to forest management and environment laws and labour and community welfare legislation. FLEGT licences show that logging rights have been granted according to the law and that timber is legally harvested. The licences also confirm that products

comply with legal requirements for trade and export and that required taxes and fees are paid. FLEGT licensed wood is considered to comply with the EU Timber Regulation fully. Customers who place our FLEGT-licensed timber products on the EU market do not need to undertake further due diligence.

For further information on SVLK <https://www.flegtlicence.org/svlk-indonesia-s-timber-legality-assurance-system> and FLEGT see <https://www.flegtlicence.org/flegt-licences-from-indonesia>

What is rustic teak?

The Titan range incorporates “Rustic Teak”, which is laminated and includes a beautiful wild grain pattern and will also have knots that give it a rugged farmhouse appeal. Rustic teak wood is a natural product that will react with the outdoor elements and look more rustic as the product ages. The laminated wood will start to part, and the wood will turn a lovely shade of silver. This is its natural course.

What is the teak weathering process?

Over time in an outdoor environment, untreated teak furniture exposed to the sun will turn a beautiful silver-grey colour. The length of time this takes will vary with climatic conditions. Not only is it common for a teak bench, chair, or table to last 70 years standing out in the elements, it is also common to pass down such furniture to future generations as an heirloom.

Why do occasional cracks appear on my furniture?

Teak is a natural material, and as such fine cracks in the end grain of components, e.g., legs and arms, may appear and then disappear with variations in the weather and the consequent change in the moisture content of the wood. Such fine cracks are expected, especially in heavier components, and will not affect the life or serviceability of your furniture.

Do I need to store my furniture during the winter?

No, Barlow Tyrie teak furniture can be left outdoors, uncovered, all year round. If you choose to cover your furniture outdoors during the winter, you should use a material that allows the wood to breathe. Optional furniture covers and storage bags are available.

How can teak furniture be maintained?

We recommend the following range of our Barlow Tyrie products to care for and maintain your teak furniture. For additional information on this range, please see <https://www.teak.com/care>.

Teak Cleaner (4TC) – will quickly remove accumulated dirt.

Teak Colour Guard (4TCG) – will maintain the golden-brown colour of the new teak by using UV inhibitors to prevent the natural greying process and pigment enhancers to help keep the natural colour of teak.

Teak Stain Guard (4TSG) forms an invisible layer to protect your teak from everyday stains such as butter, oil, and red wine, making cleaning accidental spills easy.

If you live in the UK and wish to maintain your furniture using our care products but do not wish to do the work yourself, we recommend you contact www.andrewbanks.co.uk, who can provide a regular or one-time service according to your needs.

Do I need to oil my teak furniture?

Treating with teak oil or other preservatives is not necessary; it will not extend the life of your furniture and is purely cosmetic. We do not recommend oiling your furniture.

STAINLESS STEEL

What are the properties of stainless steel?

We make our furniture using 316 “marine grade” stainless steel, which will best withstand the rigours of an outdoor environment. We have added selected products to our Mercury and Equinox ranges that feature an attractive powder-coat finish on the 316 stainless steel to give the ultimate protection in the harshest marine environment.

How can stainless steel furniture be maintained?

You should undertake regular maintenance using our care product to preserve the fine appearance of your furniture. Cleaning once or twice a year will be adequate in most circumstances but we recommend a more frequent cleaning regime to in harsh environments, including a salt or chlorine concentration found in coastal areas or around a swimming pool. Stainless steel furniture used in a chlorinated indoor environment will require frequent cleaning and we therefore recommend that you use our powder coated products.

We recommend that you regularly rinse your furniture with fresh water to remove condensed chlorinated moisture. Conventional abrasive cleaners or strong acidic cleaners should never be used on stainless steel as this can damage the finish. We recommend using Barlow Tyrie Stainless Steel Clean & Guard to care for and maintain your stainless steel furniture.

If you have any questions or concerns about how the 316-grade stainless steel is affected or best suited for your area or pool environment, please contact our Customer Services.

- Stainless Steel Clean and Guard (4SSCG) - All stainless steel is susceptible to brown surface marks, which are cosmetic and do not damage

the product. Remove these marks by regular cleaning with this care product, which leaves a fine layer of Teflon® to help prevent their appearance. Supplied with its own special applicator pad.

ALUMINIUM

What are the properties of aluminium?

Aluminium is a strong yet light material that does not corrode or rust, which makes it ideal for outdoor furniture that is easy to move. The aluminium we use is ‘virgin aluminium’, meaning it is not reclaimed from scrap and is more robust and longer-lasting. We pre-wash, etch prime and electrostatically powder-coat our aluminium furniture for optimum even cover before oven baking to fix the finish. This process prevents oxidation and gives attractive, hard-wearing surface and the possibility of various colour themes.

How can aluminium furniture be maintained?

We recommend the following Barlow Tyrie product to care for and maintain your aluminium furniture.

- Powder Coated Stainless Steel & Aluminium Cleaner (4AC) – easily removes dirt, grease, oil, pollutants, and mould.

FITTINGS & ACCESSORIES

Will the metal fittings on my furniture last as long as the teak?

We only use the best marine quality solid brass and stainless steel on our furniture. With due care and attention, these should last as long as the teak.

Do I need to use a base to locate a parasol through a dining table?

Yes, all parasols must be located in the recommended parasol base for safety. We supply our standard parasol base

for using a parasol through a dining table, or a free-standing base is available for use without a table. Parasol plates are available for use with the Equinox and Bermuda pedestal tables.

Can we use any of your dining chairs with any of your standard-height tables?

Most of our dining chairs fit comfortably under most of our standard-height dining tables. However, there are exceptions, so if you wish to ‘mix and match’, please check the item specifications on our website or discuss your requirements with your stockist.

PLANNER TOOL

What help can you offer with planning my furniture layout?

Our Barlow Tyrie online planner tool has been designed to be intuitive and help users quickly choose and design their furniture layouts from our collections. Users can define the shape and dimensions of their outside area and then experiment with the selection and arrangement of furniture, choosing from available colour and fabric options. Designs can be viewed as two-dimensional plans or three-dimensional renderings with the ability to use a photograph of the user’s space as the background. <https://www.teak.com/furniture/planner>



LONGEVITY

How long will Barlow Tyrie furniture last?

Barlow Tyrie’s outdoor furniture has exceptional longevity by using the highest quality materials, expert craftsmanship, and carefully considered design. Combined with the technical knowledge and capability of our outstanding Customer Service support, which extends long beyond warranty periods, our products are designed to last. As such, we get feedback from customers that when they eventually need to replace or wish to buy new furniture items, they will return to Barlow Tyrie based on their excellent product and customer experience.

WARRANTY

What is the warranty period for a product?

Materials and products have varying warranty periods and guarantee for residential use that excludes damage due to misuse. For further details, please see www.teak.com.

ORDERING

Please add the correct suffix to the product code when ordering. The suffix denotes Frame colour + Sling colour + ceramic tabletop colour, etc. We can process your order without delay by correctly adding the coded suffix.

e.g. Product reference code for an Aura Armchair = 1AUA.01.500

Product code [1AUA] + Graphite frame [.01] + Charcoal sling [.500]

DELIVERY

What needs to be considered before arranging delivery?

Please note some large items are very heavy. Our delivery service delivers the product to tailgate only; you will be responsible for arranging personnel to carry and position the furniture. If delivery is to a private address, you must assess access width, height, and manoeuvre room for a commercial furniture lorry. Advise the stockist if it is unsuitable before delivery. We will, of course, try to accommodate the wishes of our customers.

Warranty Periods (years)

Product	Teak	Steel	Aluminium	Sling	Other
Teak	10				
Rustic Teak	5				
Teak & Sling	10			3	
Teak & Cord	10				3
Eucalyptus					3
Stainless Steel & Teak	10	10			
Stainless Steel & Sling		10		3	
Aluminium & Teak	10		10		
Aluminium & Sling			10	3	
Ceramic Surfaces					10
Glass					2
Parasols & Bases					2
Cushions					2
Product Covers					2

Product warranties do not apply to the following:

1. Use in a contract or non-residential situation.
2. Damage or chipping to glass, ceramic or HPL due to misuse or impact.
3. Damage due to use of a pressure washer.
4. Deterioration due to the application of teak oil or other wood treatments.
5. Damage that is wear and tear from reasonable private residential use, which includes dents, paint scratches, stains, tears to fabric, etc.
6. Normal deterioration and weathering from exposure to an outdoor environment, which includes small cracks (checking) in wood, colour change, surface blemishes on stainless steel, etc.

All furniture requires some maintenance and we recommend that you clean it regularly using our care products to keep it looking its best.

If you have a problem and the warranty period has expired then you may contact us as we will always do what we can to help you.

A warranty claim must be supported by a photograph.

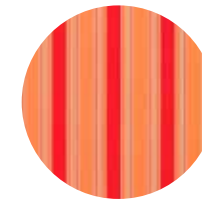
Cushion colours

Our cushions are manufactured using Sunbrella®, a colour-fast fabric that is made from a durable, all-weather, 100% solution-dyed, Teflon®-coated acrylic fibre. This fabric repels water, but cushions should not be left out in heavy rain for prolonged periods.

In North America we offer over three hundred Sunbrella® outdoor fabric choices each graded “A” through “F.” Shown here are some of our popular “Grade A” Sunbrella® fabric choices.

Please contact USSales@teak.com for your fabric grade chart.

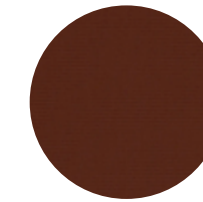
Whilst great care has been taken to reproduce fabric and material colours as accurately as possible, it should be noted that due to the limitations of the litho-printing process, we cannot guarantee that the reproduction accurately represents true fabric textures and colours. Please take this into consideration as colours illustrated should only be used as a guide. Some images may contain discontinued fabric colours and furniture ranges.



Bravada Salsa
5601-0000



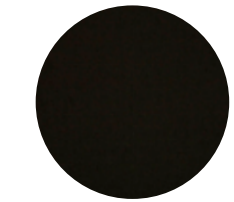
Antique Beige
5422-0000



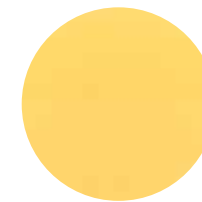
Bay Brown
5432-0000



Birds Eye
5472-0000



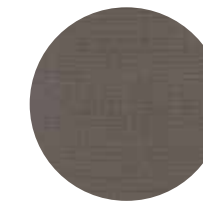
Black
5408-0000



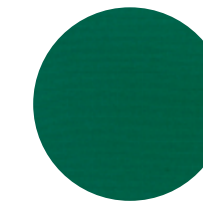
Buttercup
5438-0000



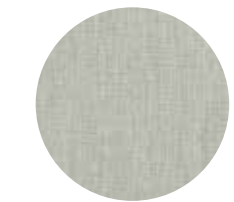
Canvas
5453-0000



Coal
5489-0000



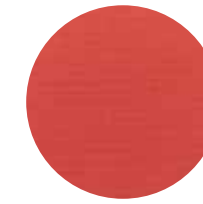
Forest Green
5446-0000



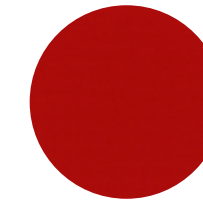
Granite
5402-0000



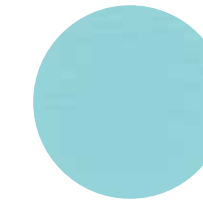
Heather Beige
5476-0000



Henna
5407-0000



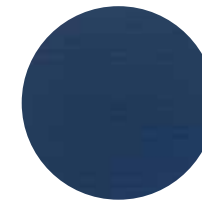
Jockey Red
5403-0000



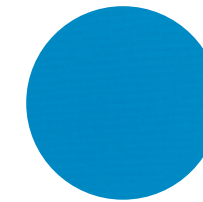
Mineral Blue
5420-0000



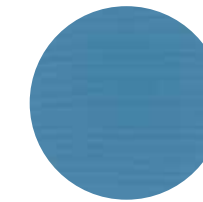
Natural
5404-0000



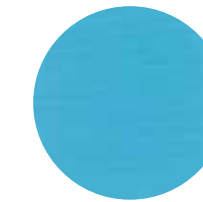
Navy
5439-0000



Pacific Blue
5401-0000



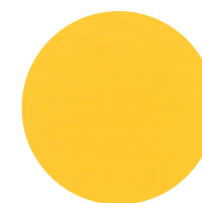
Sapphire Blue
5452-0000



Sky Blue
5424-0000



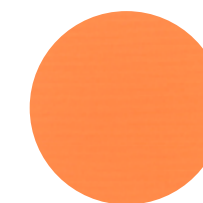
Spa
5413-0000



Sunflower
5457-0000



Taupe
5461-0000



Tuscan
5417-0000



Walnut
5470-0000



White
57003-0000

Award-winning
outdoor furniture

