

A photograph of an outdoor furniture set on a patio. In the foreground, a white-framed armchair with light-colored wooden slats for the seat and backrest is shown. To its right, a white-framed table with a wooden top holds a white bowl filled with red and green tomatoes. The patio is paved with grey interlocking stones. In the background, there is a stone wall and a wooden door. A semi-transparent white banner is overlaid on the top right of the image, containing the text 'Plantation Prestige', 'COMMERCIAL FURNITURE', and '2024 OUTDOOR CATALOG'.

*Plantation Prestige*

COMMERCIAL FURNITURE

2024 OUTDOOR CATALOG





## Furniture

- Frames are constructed of high strength tubular aluminum and steel.
  - Most all dining, side and bar seating is stackable, an excellent characteristic when furniture is stored during the off-season.
  - All furniture frames are warranted by Plantation Prestige for 3 years. Please visit [plantationprestige.com](http://plantationprestige.com) for more information.
  - Our furniture features fully-welded frames for strength and stability.
  - Metal furniture is electrostatically powder coated to resist corrosion, chipping, scratching and ultraviolet rays.
- 



## Umbrellas

- We offer several sizes of umbrellas, as well as a cantilever with a complete 360°.
  - Umbrella bases to fit almost any need – portable, in ground, free standing, etc
  - Umbrellas come with either Sunbrella® or Recacril® fabrics. Both are solution dyed fabrics, made to handle the outdoor elements.
  - Customization of umbrellas is available using your choice of fabrics or by adding your logo for optimal visibility.
- 



## Deep Seating

- All deep seating furniture is made of aluminum frames, which will not rust when used in the outdoor environment.
  - Our pieces are wrapped in an all-weather wicker, which is a strong polymer, specifically designed for outdoor use.
  - All cushions are made with Sunbrella® fabric, and can be customized to match your color scheme.
  - Most of our deep seating collections will have accompanying tables and chairs.
  - All of our frames are warranted by Plantation Prestige for 3 years. Please visit [plantationprestige.com](http://plantationprestige.com) for more information.
- 



## Additional Products

- Benches – Multiple bench options are available to complete your outdoor needs.
- Waste Receptacles – Coordinating fully steel option with rain bonnet.
- Heaters – Various styles as well as fire tables.



Caredo Collection

## *Plantation Prestige* COMMERCIAL FURNITURE

Plantation Prestige Commercial Furniture is proud to offer our line of commercial and hospitality furnishings. Plantation Prestige Commercial Furniture is dedicated to providing superior quality furnishings to the commercial and hospitality industry with a commitment to Design, Quality, Service and Execution. Plantation Prestige Commercial Furniture brings years of experience at making quality outdoor furniture to the commercial and hospitality market.

We are dedicated to providing fresh innovative designs that meet the space and aesthetic needs of our customers. Plantation Prestige Commercial Furniture has an in-house design team with many years of design and fabricating experience. We travel the world for design inspiration and have the capability to design custom products to fit your needs.

We are proud to introduce our 2024 line and look forward to servicing your furniture needs.



# Featured New Products!

*New products to be announced for the year of 2024. Contact your sales representative for more information.*



Tri-Color Pic Nic Table | Page 19





Durango Seating with Fire Table | Page 12



Savannah Dining Chair | Page 15





Montana Collection

## All Steel Frame Collections

---

### Caredo

The Caredo dining chair offers great lumbar support for comfort and is stackable for easy out of the way storage. Is stylish and durable, will stand the test of time in any commercial setting.

*\* This collection is stackable!*

*Offered in charcoal, bronze, and platinum finishes*



**Caredo Dining Chair**

2171100-04  
25D x 24W x 35.5H



**Caredo Bar Stool**

2170300-04  
33D x 24W x 51H

### Benson & Rockport

These two collections are similar with a stylish rounded back, and comfortable breathable seating for any outdoor area. Benson comes in a dining chair and bar stool while Rockport comes in a dining chair only.

*\* This collection is stackable!*

*Offered in charcoal and platinum finishes*



**Benson Dining Chair**

2181100-04  
21.5D x 22W x 35H



**Benson Bar Stool**

2180300-02  
21.5D x 22W x 45H



**Rockport Dining Chair**

2041100-04  
26D x 22W x 33H

### Montana

The Montana side chair, dining chair, and barstool offer a waterfall front edge design for a more comfortable feel when sitting in these pieces. The Montana seating collection is a grand combination of durability, comfort and style.

*\* This collection is stackable!*

*Offered in charcoal and bronze finishes*



**Montana Dining Chair**

2021100-04  
21D x 22W x 33H



**Montana Side Chair**

2020700-04  
21D x 19W x 33H



**Montana Barstool**

2020300-02  
21D x 19W x 41H





Nantucket Side Chairs



## All Aluminum Frame Collections

---

### Aspen & Tahiti

These two new chairs are all aluminum, making them lightweight, yet very functional in your outdoor space.

\* Chairs are stackable

**New for 2024!**



**Aspen Dining Chair**

8220700-04  
21D x 16W x 33H  
Charcoal  
Gunmetal Grey  
Platinum



**Tahiti Dining Chair**

8231100-02  
26D x 22W x 33H  
Gunmetal Frame  
Grey sling seat  
Grey rope back

### Antigua & Cayman

A timeless classic design featuring a variegated resin weave, stylish and traditional for any outdoor setting. Great for any outdoor area especially along the coast or more tropical regions. The all-aluminum frame has a hand applied finish, giving the appearance of wood, but in fact is metal and withstand the outdoor elements very well. Chairs are stackable, making it easy to store away when needed.

\* Chairs are stackable, Barstool is not

Cayman Chair and Barstool available in black and white or coffee and beige



**Antigua Side Chair**

2130700-0480  
22D x 17.5W x 34H



**Antigua Bar Stool**

2130300-0280  
22D x 18W x 45H



**Cayman Side Chair**

2140700-04  
22D x 17.5W x 34H  
Coffee & Beige  
Black & White



**Cayman Bar Stool**

2140300-02  
22D x 18W x 45H  
Coffee & Beige  
Black & White

### Nantucket

The Nantucket side chair and barstool bring a modern design to your outdoor space. The all-aluminum frame and back, with grey woven cord for the seat will update your patio with a fresh look, while providing comfort with this NEW collection.

\* Chairs are stackable, Barstool is not

Gunmetal grey with grey resin rope weave  
Black frame with Barnwood rope weave



**Nantucket Side Chair**

8240700-04  
19D x 19W x 32H



**Nantucket Barstool**

8240300-02  
19D x 19W x 43H







## Durango

Durango is a refined rustic collection, featuring a faux wood with an aluminum frame. Not only does it have a classic slat, but combines a curved ergonomic design for comfortable seating. It's handsome presence still affords a light-weight, stackable chair for easy storage.

The Durango collection is offered in a variety of finishes listed below.

*\* Chairs are stackable, barstools are not*



**Durango Dining Chair**

8771100-04  
23D x 23W x 36H



**Durango Side Chair**

8770700-04  
23D x 18.5W x 36H



**Durango Backless Barstool**

8770310-02  
16D x 13W x 28H



**Durango Barstool**

8770300-02  
23D x 18.5W x 47H



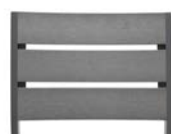
(51) Black Frame  
Barnwood



(52) White Frame  
Honey



(53) Bronze Frame  
Teak Faux Wood



(55) Gunmetal Frame  
Grey Faux Wood



(57) Platinum Frame  
Teak Faux Wood



(59) Black Frame  
Tri-Color

***New Color!***





Durango Weave Collection

# Durango Weave

The Durango Weave is an appealing addition to our Durango collection. The aluminum frame encompasses an elegant all-weather weave to give the chair texture and design. This collection would look great with the Durango tables shown on pages 14-15.

The Durango Weave collection is offered in a grey weave with a gun metal frame.

*\* Chairs are stackable, barsools are not*



Durango Dining Chair

8761100-0455  
23D x 23W x 36H



Durango Side Chair

8760700-0455  
23D x 18.5W x 36H



Durango Bar Stool

8760300-0255  
23D x 18.5W x 47H

***\*New Chestnut finish can be seen on page 15!***



New for 2024!



Telluride Deep Seating Collection

## New Deep Seating | Telluride

Expanding our deep seating offerings allows us to offer high quality products for your resorts, restaurants, pools or any hospitality avenue looking for a modern, upscale look. Introducing the Telluride and the Acadia collection.

Telluride comes with a barnwood aluminum slat and a matte black aluminum frame (matching our Durango collection in barnwood). Sunbrella cushions are included in Cast Silver fabric.



Telluride Lounge Chair

8820600-0140433  
36D x 30W x 31H



Telluride Right Side Chair

8820500-0140433  
36D x 30W x 31H



Telluride Left Side Chair

8820400-0140433  
36D x 30W x 31H



Telluride Corner Chair

8820100-0140433  
36D x 36W x 31H



Telluride Middle Chair

8820200-0140433  
36D x 26W x 31H



Telluride Chat Table

8822547-0150  
25D x 47W x 17H



New for 2024!



Acadia Deep Seating Collection

## New Deep Seating | Acadia

Acadia features the modern look of a rope weave, in gunmetal grey color (matching our Durango collection in gunmetal grey). The frame is gunmetal in color, all aluminum and the cushion is Sunbrella Granite fabric. Imagine the possibilities when adding either of these collections to our Durango tables and seating, for a complete design in an outdoor space!



Acadia Lounge Chair

8810600-015402  
33D x 26W x 31H



Acadia Right Side Chair

8810500-015402  
33D x 26W x 31H



Acadia Left Side Chair

8810400-015402  
33D x 26W x 31H



Acadia Corner Chair

8810100-015402  
33D x 33W x 31H



Acadia Middle Chair

8810200-015402  
33D x 24W x 18H



Acadia Chat Table

8812547-0155  
23D x 47W x 16H





Durango Seating with Fire Table

## Durango Deep Seating

The Durango Deep Seating collection is designed to create a comfortable option, styled in a modern, yet subtle grey wicker to upgrade your outdoor space. Each seating piece fastens easily to another, offering multiple configurations to furnish your outdoor area accordingly. The Durango Deep Seating pieces are constructed of an all-weather woven wicker, wrapped around an all-aluminum, highly durable frame for the outdoors.

*\* Sunbrella® cushions included with limited colors available for an upcharge (ask your rep for more information).*

*\* Shown in Canvas Granite.*





**Right Hand Section**  
8770500-015402  
37.4D x 29.5W x 34.6H



**Corner Section**  
8770100-015402  
37.4D x 37.4W x 34.6H



**Left Hand Section**  
8770400-015402  
37.4D x 29.5W x 34.6H



**Middle Section**  
8770200-025402  
37.8D x 25.8W x 34.6H



**Double Chaise Lounge**  
8770800-015402  
84D x 61.5W x 36H



**Lounge Chair**  
8770600-015402  
37D x 34W x 35H



**Chaise Lounge**  
8770900-025402  
81D x 29W x 21H



**Durango Side Table**  
8772121-0155  
21D x 21W x 18H



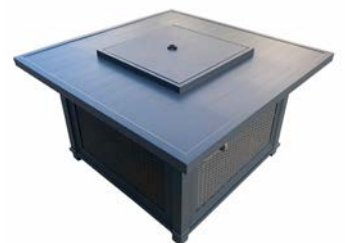
**Durango Coffee Table**  
8772747-0155  
27D x 47W x 18H



**Wicker Coffee Table**  
8772746-0155  
27D x 46W x 17H



**Wicker End Table**  
8771836-0155  
18D x 36W x 17H



**Fire Table**  
8774242-0155  
42D x 42W x 22H  
**New for 2024!**





## Key Largo

The timeless design of classic wicker has been recreated with our beautiful Key Largo deep seating. Made of a woven all-weather resin, and crafted into a unique arrangement, with many seating possibilities. Beauty and functionality at its best with built-in storage within the armrest, and each piece is sold separately to meet your outdoor needs. Shown here with our Charleston Fire Table. Fully equipped with gas burner and storage for propane tank. Simple turn of the dial to illuminate your outdoor area.

\* Sunbrella® cushions included with limited colors available for an upcharge (ask your rep for more information).

\* Shown here in Sesame Linen.

\* Decorative pillows not included



Curved Sectional

8780200-028318  
34D x 47W x 32H



Triangular Storage Section

8782134-01  
34D x 21W x 32H



Charleston Fire Table

8742500-01  
47W x 27H

## Savannah *New for 2024!*

The Savannah collection is designed with a hand-woven, all-weather wicker that won't fade or split, leaving you with a worry-free solution all year long. The frame is constructed of commercial grade tubular aluminum, therefore rust free and lighter weight for easier mobility. This collection affords you many options and varieties within your outdoor seating space. The aluminum chat table has a durable finish that mimics a rich wood stain.

\* Sunbrella® cushions included with limited colors available for an upcharge (ask your rep for more information).

\* Shown here in Henna.

\* Decorative pillows not included.



Savannah Corner Section

8790100-015422  
35D x 35W x 34H

*\*also stocked in Henna*



Savannah Middle Section

8790200-025422  
35D x 31W x 34H

*\*also stocked in Henna*



Savannah Coffee Table

8794040-01  
40D x 40W x 20H





Savannah Chaise Lounge

*\*New pieces added to the Savannah Collection for 2024!*



Savannah Dining Chair

8761100-0467  
23D x 23W x 36H



Savannah Side Chair

8760700-0467  
23D x 18.5W x 36H



Savannah Barstool

8760300-0267  
23D x 18.5W x 47H



Savannah Chaise Lounge

8790900-025422  
81D x 29W x 21H



Savannah Bar Table

8793333-0167  
33D x 33W x 40H  
*Umbrella hole*



Savannah Dining Table

8793636-0167  
36D x 36W x 29H  
*Umbrella hole*





## Santa Cruz

The Santa Cruz collection is designed using the latest in color schemes for the new year – Greystone and barnwood. It is made with a hand-woven, all-weather wicker that won't fade or split, leaving you with a worry-free solution all year long. The frame is constructed of commercial grade tubular aluminum, therefore rust free and lighter weight for easier mobility. This collection, complete with has so many possibilities that can certainly fill any outdoor space.\* Sunbrella® cushions included with limited colors available for an upcharge (ask your rep for more information). Shown here in Cast Shale.



**Right Hand Section**

8562500-0240432  
31.5D x 60W x 28H



**Left Hand Section**

8562400-0240432  
31.5D x 60W x 28H





Santa Cruz Collection



**Corner Section**

8560100-0140432  
31.5D x 31.5W x 28H



**Middle Section**

8560200-0240432  
31.5D x 27W x 28H



**Lounge Chair**

8560600-0140432  
30.7D x 31.5W x 28H



**Dining Chair**

8561100-0240432  
25D x 23W x 33H



**Side Table**

8562020-0156  
19D x 19W x 22H



**Coffee Table**

8563737-0156  
37D x 37W x 18H



**Dining Table Square**

8563535-0156  
35D x 35W x 29H

\*no umbrella hole



**Dining Table Long**

8563970-0156  
70D x 39W x 29H

\*no umbrella hole



## Tables / Durango Collection



Durango Collection | Platinum Teak





**Dining Table Long**

8773053-01  
30D x 53W x 29H  
*Umbrella hole*



**Dining Table Square**

8773030-01 | 30D x 30W x 29H  
8773737-01 | 37D x 37W x 29H  
*Umbrella hole*



**Bar Table Long**

8773361-01  
33D x 61W x 40H  
*Umbrella hole*



**Bar Table Square**

8773333-01  
33D x 33W x 40H  
*Umbrella hole*



**Dining Community Table**

8773076-01  
30D x 76W x 29H  
*Umbrella hole*



**Dining Table Round**

8773600-01 | 36" Round x 29H  
8775000-01 | 50" Round x 29H  
*Umbrella hole*



**Bench with Arms**

8772100-02  
23D x 77.5W x 35H



**Backless Bench**

8772000-01  
19.25D x 69W x 17.5H

**Frame Finish Options:**



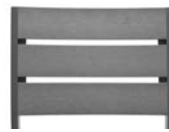
(51) Black Frame  
Barnwood



(52) White Frame  
Honey



(53) Bronze Frame  
Teak Faux Wood



(55) Gunmetal Frame  
Grey Faux Wood



(57) Platinum Frame  
Teak Faux Wood



(59) Black Frame  
Tri-Color



**Pic-Nic-Table**

8883072-01  
Table Top: 30D x 72W  
Attached Bench: 15D x 72W  
Overall: 77D x 72W  
*No Umbrella Hole*



**Pic-Nic-Table**

8882548-01  
Table Top: 25D x 48W  
Attached Bench: 10D x 48W  
Overall: 62D x 48W  
*Umbrella Hole*



**Quad Pic-Nic-Table**

8884747-01  
Table Top: 46D x 46W  
Attached Bench: 10D x 46W  
Overall: 56D x 56W  
*Umbrella Hole*



**Avondale Table w/ Bench**

8887065-0352  
Overall: 36D x 70W  
*ADA Available*  
*No Umbrella Hole*

# Custom Solid Acrylic Table Tops

Plantation Prestige is pleased to offer a composite, solid acrylic table top. These molded table tops are a great choice wherever durability, attractive appearance & performance are desired to enhance the outdoor seating space. These high quality commercial grade, solid acrylic tops are custom made in various sizes and colors, made to withstand the elements of the outdoor environment. Please contact your local sales representative for further details to place an order.

## Features:

- Nonporous surface to keep dirt or contaminants from penetrating the top, makes top easy to clean.
- Consistent color through the material thickness for maintaining an attractive appearance.
- High resistance to UV fading in intense sun locations.
- Resistance to freeze-thaw cycles.

2413000-01 | 30" Round  
 2413030-01 | 30" x 30"  
 2413600-01 | 36" Round  
 2413636-01 | 36" x 36"  
 2413048-01 | 30" x 48"

- For 30" table tops, use bases 2342700, 2332700, and 2322700
- For 36" table tops, use bases 2343700, 2333700, and 2323700
- For 30" x 48" table top, use base 2353048

See table bases on page 19.  
 Custom sizes available.

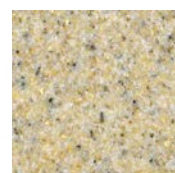
*Please contact your sales rep for details. Umbrella holes optional.*



Brown Matrix (02)



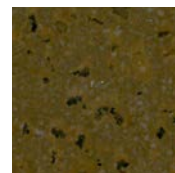
White Quartz (08)



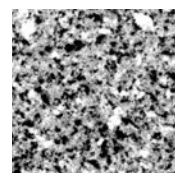
Brownstone (03)



Wheat (12)



Cocoa (04)



Black Matrix (06)

# Mesh Tables

*Please contact your local representative for further information*



**Mesh Top with  
 ADA Base**

2203048-0150ADA  
 30D x 48W



**Mesh Top with  
 Butterfly Base**

2203048-0150BB  
 30D x 48W





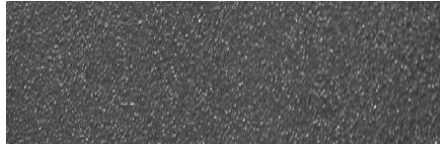
# Build Your Own Table

Plantation Prestige Commercial Furniture offers a wide variety of customizable table options that are suitable for any commercial setting. Choose your base, then choose your top and create one of many potential combinations!

## Frame Finish Options



Bronze (20)



Charcoal (50)



Platinum (70)

## Café Tables



### Micromesh Tops

2202430-01 | 24" x 30"  
 2203030-01 | 30" x 30"  
 2203000-01 | 30" Round



### Solid Metal Tops

2212430-01 | 24" x 30"  
 2213030-01 | 30" x 30"  
 2213000-01 | 30" Round



### Acrylic Solid Tops

2413030-01 | 30" x 30"  
 2413000-01 | 30" Round

## Table Bases



### Butterfly Base

2342700-01  
 29H x 28 Diagonal Leg



### Spun Dining Base

2322700-01  
 29H x 22 Diameter Base



### Spun Bar Base

2325700-01  
 40H x 22 Diameter Base

## Dining Tables



### Micromesh Tops

2203636-01 | 36" x 36"  
 2203600-01 | 36" Round  
 2204200-01 | 42" Round



### Solid Metal Tops

2213636-01 | 36" x 36"  
 2214600-01 | 46" Round



### Acrylic Solid Tops

2413636-01 | 36" x 36"  
 2413048-01 | 30" x 48"  
 2413600-01 | 36" Round



### Butterfly Base

2343700-01  
 29H x 32 Diagonal Leg



### Spun Dining Base

2323700-01  
 29H x 30 Diameter Base



### Spun Bar Base

2324700-01  
 40H x 30 Diameter Base



### Dining T-Base for 30x48 Top

2353048-01  
 29H x 32 Leg Spread

*\*All micromesh and solid metal tops include an umbrella hole except the 24 x 30 size.*



# Poolside Designs

Treat your guests to the classic outdoor comfort of our poolside designs. The collection features stackable furniture, saving space when not in use, and offers comfortable, stylish options that will hold up against the environment. With an array of combinations with sling colors, as well as frame finish options, these luxurious additions will meet all your hospitality needs!

- Multiple color options for slings
- Multiple color options for frame finishes
- Dining chairs/chaise lounges are all stackable
- Handcrafted in the USA
- 3-year frame warranty
- Recyclable



## Sarasota

Transform your outdoor décor by adding the unique style and comfort of the Sarasota collection, combining aluminum tubing and a beautiful design to make each piece stand out in any setting.



Dining Chair

4051100-04  
28D x 24W x 35H



Chaise Lounge

4050900-04  
77D X 29W X 37H



## Miramar

The Miramar collection offers a bold, sleek design that brings sophistication to any patio, pool or restaurant space. Indulge in the luxury of the new age look with the Urban Sling design.



Dining Chair

4021100-03  
23D x 25W x 34H



Chaise Lounge

4020900-03  
79.5D x 31W x 35.5H

## Navarre

Indulge in the luxury of the new age look with the Navarre Sling design. With the sleek straight lines of the all-aluminum frame, an urban feel can be brought to your hospitality space.



Dining Chair

4031100-03  
28D x 24W x 35H



Chaise Lounge

4030900-04  
78.5D x 25W x 38H

## Panama

Featuring a wide arm for increased comfort, the Panama collection provides guests the ultimate in relaxation, striking the perfect balance between comfort and luxury.



Dining Chair

4041100-04  
28D x 24.5W x 34.5H



Chaise Lounge

4040900-04  
76D x 29.5W x 38.5H

## Customize!

Customize your collection with various sling colors and frame options, shown on page 23.





## Aluminum Adirondack

Timeless style using aluminum materials make this a beautiful outdoor furniture set, season after season. Choose from all aluminum or aluminum frame with sling.

*\* Customize your collection with various sling colors and frame options! Ask rep for details*

*\*Decorative pillows not included*



**All Aluminum Adirondack**

4061100-01  
35 x 30W x 36H



**Aluminum Adirondack with sling**

4071100-01  
30D x 31W x 38H

## Poolside Accessories



**20" Poolside Table**

20" x 20" x 18"  
4082020-01



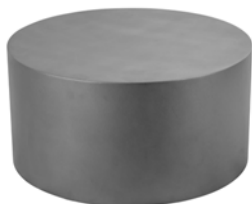
**24" Poolside Table**

24" x 24" x 18"  
4082424-01



**18" Drum Side Table**

18" x 18" x 19"  
4091800-01



**Drum Chat Table**

36" x 36" x 19"  
4093600-01



**Waste Receptacle**

27.5D x 27.5W x 31H  
7927800-02

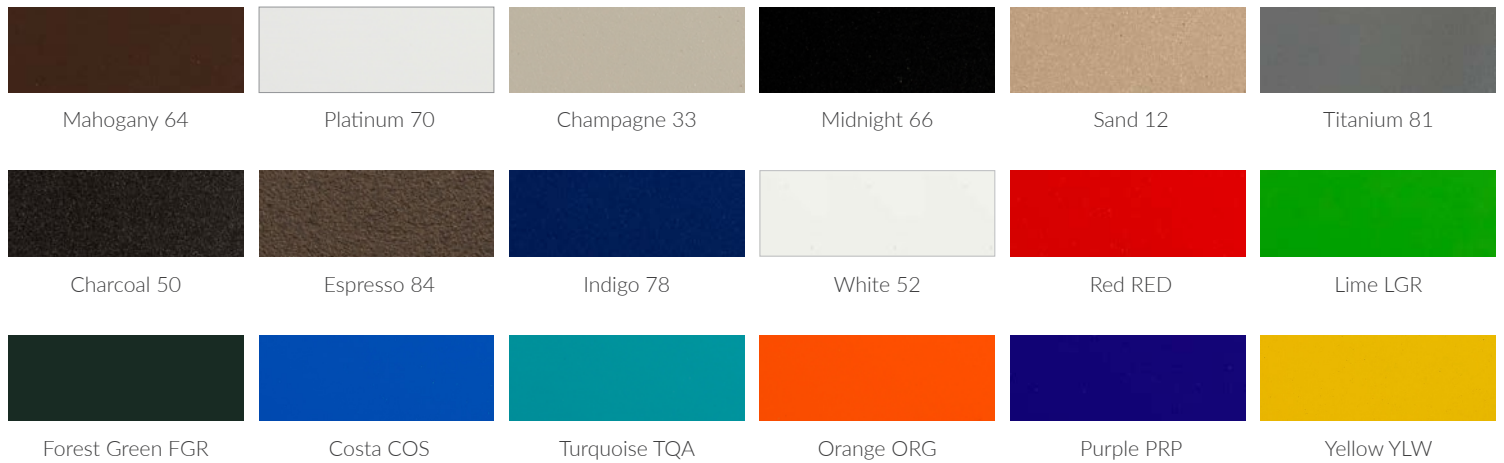


**6' Bench**

27D x 72W x 38H  
7922100-01

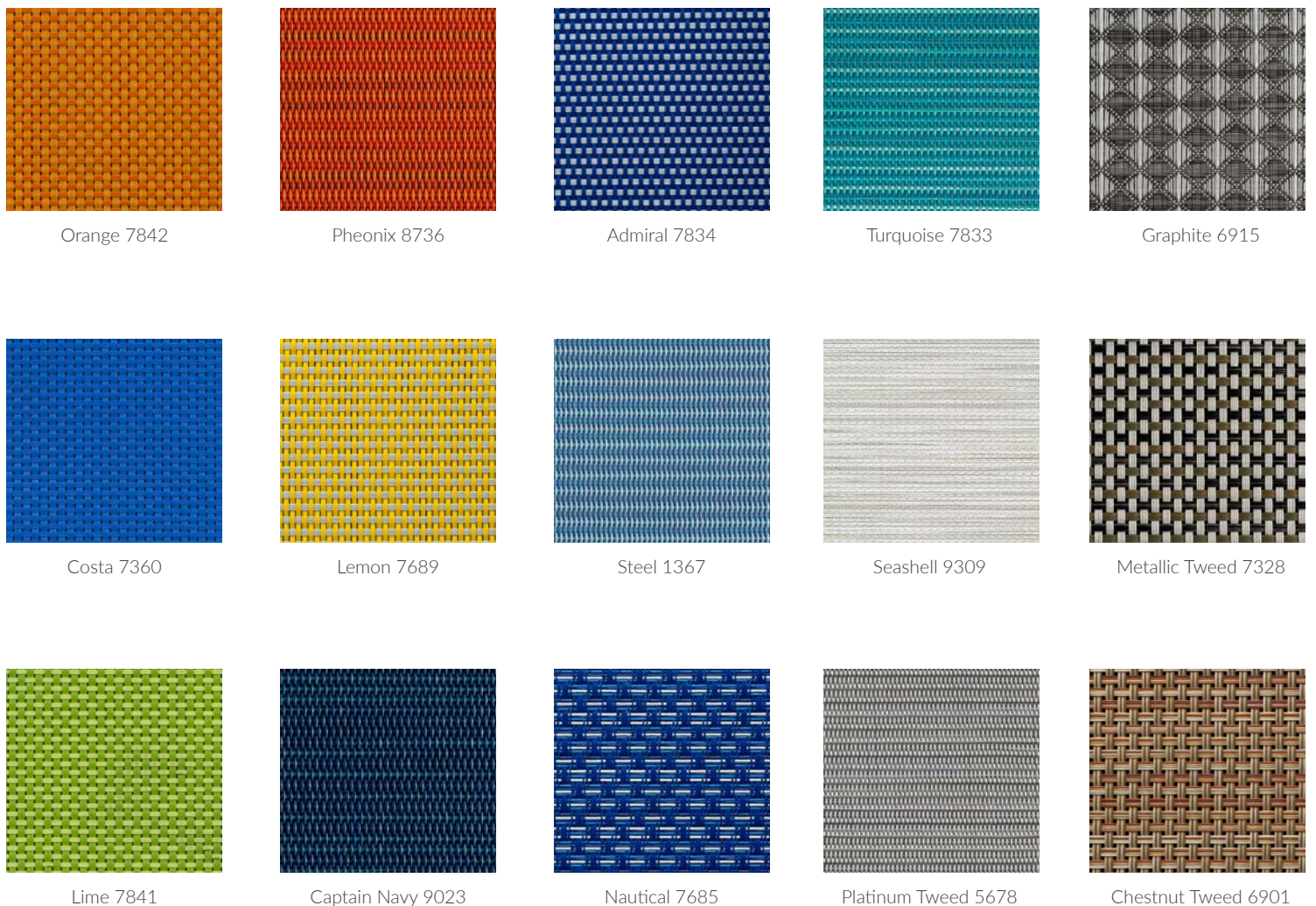
# Poolside/Hospitality Frame Finishes

\* Customize your collection with various sling colors and frame options! Ask rep for details



# Poolside/Hospitality Sling Options

\* Customize your collection with various sling colors and frame options! Ask rep for details





# Laguna Collection

by Plantation Prestige



## Laguna Resin Seating

Crafted with the latest in technology, Laguna products are designed to be functional, durable and ergonomic with modern fashion, the latest trends and the upmost in style. With consideration to every precise detail, we are pleased to bring you easy to use, environmentally friendly products that strictly adhere to recyclable policies using only ecologically sound materials.

# Laguna Collection

Please contact your local representative for further information



**Grayton Arm Chair**

2721100-02  
22.2D x 22.1W x 32.3H



**Grayton Side Chair**

2720700-02  
22.2D x 19.8W x 32.3H



**Perdido Arm Chair**

2761100-02  
23.6D x 22.4W x 31.5H



**Henderson Arm Chair**

2741100-02  
23.6D x 22.8W x 31.3H



**Panama Side Chair**

2780700-04  
22.8D x 18.9W x 34.6H



**Alys Side Chair**

2790700-02  
21.3D x 20.3W x 34.8H



**Rosemary Side Chair**

2770700-02  
20.7D x 21.1W x 29.9H



**Walton Side Chair**

2750700-04  
20.7D x 19.5W x 32.3H



**Grayton Barstool**

2720300-01  
22D x 20W x 30H



**Panama Barstool**

2780300-01  
22D x 19W x 30H



**Walton Barstool**

2750300-01  
21D x 20W x 30H



**Laguna Side Table**

2761414-02  
14.8D x 14.8W x 14.6H







## Edison Cantilever Umbrella

The Edison cantilever umbrella combines style with size, strength and durability for those larger open spaces that need more shade protection from the sunlight. Edison is the sister cantilever to the popular Avalon series, but offered in a larger 13' octagon, and 10' x 10' square size. Like Avalon, it features a full 360 degree rotation and infinity tilt which allow for easy opening and closing. The Edison cantilever features heavy gauge extruded aluminum and stainless steel parts on a marine grade, corrosion resistant aluminum frame, making the Edison cantilever suitable for all commercial applications. The Edison cantilever has a three year frame warranty and is available in additional powder coated frame finishes for an additional cost.

*Please contact your local representative for further information.*

*\*Base options can be found on page 31 and fabric options on page 32.*

### Features:

- All-aluminum extruded mast, combined with stainless steel parts.
- Crank lift for smooth and effortless operation, offering countless angles for shade from the sun.
- Full 360 degree rotation
- High impact resin critical joints for greater flexibility.
- Wind stabilizer kit and black protective cover bag included.

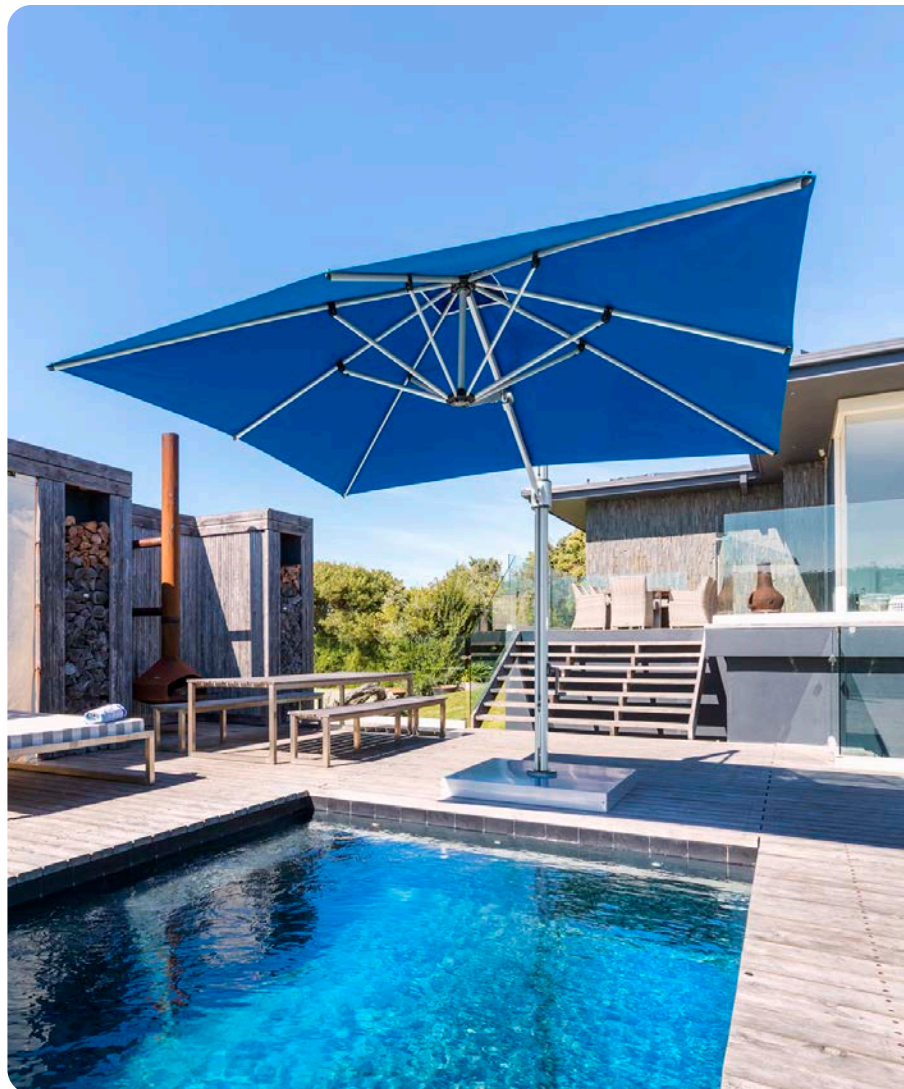
### Finish:

Matte Silver (additional powder coat finishes available for an upcharge, contact your local rep for more information)

Edison cantilever umbrellas have been tested successfully in extreme weather conditions up to 35 mph, however we strongly recommend closing your umbrella when not in use. Wind ratings do not form part of, nor fall under any PPCF warranties.

### Item numbers:

- 9020-01 10' x 10' square cantilever
- 9021-01 13' octagon cantilever





## Avalon Cantilever Umbrella

The Avalon cantilever umbrellas provide style with size for the outdoor commercial space. Its 360 degree rotation and multiple tilting angles for easy opening and closing, offer greater flexibility and make this umbrella a great option for shading any commercial environment. Avalon cantilever umbrellas are made of heavy gauge extruded aluminum and stainless steel parts on a marine grade corrosion resistant frame. This cantilever umbrella, available in two sizes, is suitable for use in low to moderate wind conditions and ensures hours of protection from the sun and light rain. The Avalon cantilever frame and frame finish has a 3 year limited commercial warranty.

*Please contact your local representative for further information.*

*\*Base options can be found on page 31 and fabric options on page 32.*

### Features:

- All-aluminum extruded mast is strong and durable, built for strength in any commercial setting.
- Crank lift designed for smooth and effortless operation, providing countless tilt angles for shade from the sun.
- Full 360 degree rotation
- High impact resin critical joints give greater flexibility.
- Wind stabilizer kit and black protective cover bag included.
- 3 year limited warranty on frame

### Finish:

Matte Silver

Avalon cantilever umbrellas have been tested successfully in extreme weather conditions up to 25 mph, however we strongly recommend closing your umbrella when not in use. Wind ratings do not form part of, nor fall under any PPCF warranties.

### Item numbers:

9018-01 9' x 9' square cantilever

9019-01 11' octagon cantilever







## Geneva Umbrellas

The Geneva umbrellas combine luxury with style to create a sophisticated look in any outdoor setting. The sturdy all-aluminum frame and easy glide pulley system allows for effortless opening and closing. Also includes a solid marine grade, chrome-plated aluminum finial for an enhanced appearance.

*Please contact your local representative for further information.*

*\*Base options can be found on page 31 and fabric options on page 32.*

### Features:

- All Aluminum Frame Polished Silver Pole and Ribs, Pulley System w/Locking Pin
- 1.5" diameter two piece aluminum
- 1/8" thickness pole
- Heavy gauge pulley system for easy opening and closing
- Reinforced four-layer pockets prevent fabric from tearing
- Stainless steel hardware
- Solid marine grade chrome plated aluminum finial
- 3 year limited warranty on frame

### Item numbers:

9115-01 6.5' x 6.5' square  
9116-01 7.5' x 7.5' square  
9117-01 7.5' octagon  
9118-01 9' octagon  
9119-01 11' octagon





## Montego Umbrellas

The Montego umbrellas offer exceptional durability and design for the outdoor environment, offered in 3 different frame finish colors and 4 different sizes. The all-aluminum pole and durable fiberglass ribs allow for greater flexibility in stronger winds. Montego has two lift options, a pulley system design with a locking hook to secure upper frame into pole and keep cord out of reach when in use. There is also a solid stainless steel handle option for manually cranking the umbrella to its upright position. The Montego umbrella is designed to last and will give your outdoor space an elegant look for years to come. The Montego frame and frame finish has a 3 year limited commercial warranty. The manual crank mechanism is warranted for 2 years.

*Please contact your local representative for further information.*

*\*Base options can be found on page 31 and fabric options on page 32.*

### Features:

- 1.5" diameter all-aluminum 2 pc pole
- 1/2" fiberglass ribs and struts for maximum strength and flexibility
- 1/8" aluminum pole wall thickness for great strength and durability
- Optional lift systems for easy opening and closing - solid stainless steel crank for CL series
- Reinforced four-layer pockets prevent fabric

from  
tearing

- Stainless steel hardware throughout
- 3 year limited warranty on frame

### Finish:

- 72 - Matte Silver
- 52 - Matte Black
- 21 - Bronze
- 55 - Gunmetal

Montego umbrellas have been tested successfully in extreme weather conditions up to 40 MPH, however we strongly recommend closing your umbrella when not in use, or when sustained winds exceed 25 MPH. Wind ratings do not form part of, or fall under any PPCF warranties.



### Item numbers:

| Pulley Lift | Crank Lift |                    |
|-------------|------------|--------------------|
| 9965PL-01   | 9965CL-01  | 6.5' x 6.5' square |
| 9976PL-01   | 9976CL-01  | 7.5' x 7.5' square |
| 9975PL-01   | 9975CL-01  | 7.5' octagon       |
| 9919PL-01   | 9919CL-01  | 9' octagon         |
| 9911PL-01   | 9911CL-01  | 11' octagon        |



# Promenade Umbrellas

The Promenade umbrellas are simple in design yet provide the classic traditional look for your every day market umbrella needs. The 2 piece threaded aluminum pole with fiberglass rib umbrella frame is suitable for any large or small restaurant type properties. The promenade umbrellas will enhance any outdoor patio, and are easy to push upright to multiple desired hole positions, and lock in to place with the attached locking pin. Available in 2 sizes and a wide variety of vibrant Sunbrella colors. Also makes for a nice logo branded umbrella if desired. Promenade umbrellas have a 1 year warranty.

*Please contact your local representative for further information.*

*\*Base options can be found on page 31 and fabric options on page 32.*



**6' Square Aluminum Market Umbrella with Fiberglass Ribs and Manual Lift**

Black Pole - 9602-01



**7' Octagonal Aluminum Market Umbrella with Fiberglass Ribs and Manual Lift**

Black Pole - 9720-01

## Features:

- All-aluminum threaded 2 pc pole for great support and strength
- 1.5" diameter pole
- Reinforced fiberglass ribbed upper frame
- Stainless steel attached locking pin
- Double stitched two layer pockets to resist fabric tears at pressure points on edges of umbrella
- Replaceable canopies and some parts are available if ever needed
- 1 year limited warranty on frame



# Umbrella Bases

Please contact your local representative for further information

## Table Use



**50 lb. Resin Coated Concrete Base**

Matte Silver - 2239850-0170  
 Black - 2239850-0150  
 Bronze - 2239850-0121  
 16" Round



**70 lb Galvanized Steel**

22398070-0170  
 24" Round

*\*other weights available*



**48 lb. Freestanding Umbrella Base**

2239848-01  
 Charcoal - 2239848-0150  
 Gunmetal - 2239848-0155  
 Platinum - 2239848-0170  
 19" Round



## Freestanding



**75 lb. Freestanding Umbrella Base**

Silver Mist - 2239875-0174  
 Black - 2239875-0150  
 Bronze - 2239875-0121  
 24" Square with wheels



**80 lb. Freestanding Resin Coated Umbrella Base**

2239882-0150  
 20.5" Round



**100 lb. Freestanding Concrete Filled Umbrella Base**

Silver Mist - 22398100-0174  
 Black - 22398100-0150  
 24" Round with wheels



**150 lb. Freestanding Umbrella Base**

2230150-0170  
 36" Round

## Cantilever



**Direct Surface Mount for Cantilever Umbrellas**

Avalon - 2239812-0150  
 Edison - 2239813-0150  
 12.5" Round



**In-Ground Mount for Cantilever Umbrellas**

Avalon - 2239818-0170  
 Edison - 2239820-0170  
 8" Round



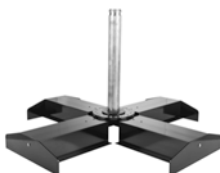
**Avalon Cantilever Steel Plate Base**

2233350-0170  
 40" x 2", 335 lbs  
 double stacked plates



**Edison Cantilever Steel Plate Base**

2235550-0170  
 40" x 2", 555 lbs  
 triple stacked plates



**Modular Cross Brace for Cantilever Umbrellas**

2239816-0150  
 39" x 39"



**Base Cover with Modular Cross Brace**

Silver Mist - 2239817-0174  
 Matte Black - 2239817-0152  
 40" x 40"  
 concrete pavers not included



**Edison Cross Brace with Aluminum Cover**

2239821-0172  
 45" x 45"  
 concrete pavers included

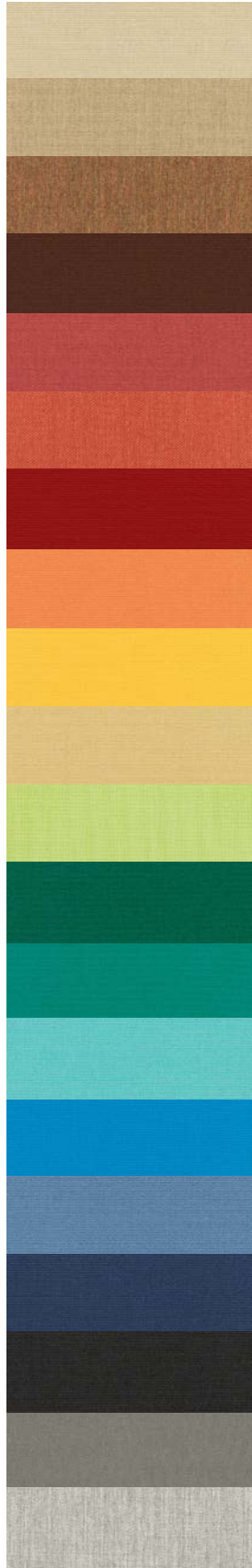




We offer Sunbrella canvas solids that are 7 ounce 100% upholstery grade, solution-dyed acrylic material. Sunbrella offers a 5 year warranty on fading under normal atmospheric conditions.

\*\*\*Ask your sales rep for fabric lead time. More colors may be available for your choosing.

- Canvas Antique Beige 5422
- Canvas Heather Beige 5476
- Canvas Teak 5488
- Canvas Bay Brown 5432
- Canvas Henna 5407
- Canvas Brick 5409
- Canvas Jockey Red 5403
- Canvas Tuscan 5417
- Canvas Sunflower 5457
- Canvas Wheat 5414
- Canvas Parrot 5405
- Canvas Forest Green 5446
- Canvas Teal 5456
- Canvas Aruba 5416
- Canvas Pacific Blue 5401
- Canvas Sapphire Blue 5452
- Canvas Navy 5439
- Canvas Black 5408
- Canvas Charcoal 54048
- Canvas Granite 5402



We offer Recacril fabric which is a 9 ounce 100% marine grade, solution-dyed acrylic material. Recacril offers a 7 year warranty on fading under normal atmospheric conditions.

\*\*\*Ask your sales rep for fabric lead time. More colors may be available for your choosing.

- BGA: Burgandy
- BKA: Black
- BNA: Brown
- CGA: Cadet Grey
- CHGA: Charcoal
- CPA: Capri
- CRA: Coral
- FGA: Forest Green
- LNA: Linen
- LRA: Logo Red
- NBA: Navy Blue
- ORA: Orange
- PBA: Pacific Blue
- PTA: Pistachio
- TQA: Turquoise
- WHA: White
- YLA: Sunflower
- TRA: Terracotta
- JRA: Jockey Red
- PKN: Pumpkin
- SPH: Sapphire
- TNM: Titanium
- NSA: Navy Stripe
- YSA: Yellow Stripe
- BKSA: Black Stripe
- BSA: Blue Stripe
- OSA: Orange Stripe
- RSA: Red Stripe
- TQSA: Turquoise Stripe



# Customize Your Umbrella!

Choose a solid color, alternate panels or make a complete rainbow with your choice of fabrics!

**LOGO YOUR UMBRELLA** for a complete look!

Logos may be applied to any umbrella.

- Vectorized .EPS or .AI file is preferred format for artwork. PDF, PSD or high resolution JPEG is also acceptable.
- Artwork must be approved by customer.







## Outdoor Patio Heaters

Outdoor patio heaters are essential for those who want to maximize the use of their outdoor spaces year-round. Whether for relaxation or socializing, these heaters offer a perfect solution to keep outdoor areas warm and inviting, allowing people to enjoy the great outdoors even when the weather gets chilly. Our heaters are constructed to withstand various weather conditions, including rain, wind, and snow, depending on their intended use.



**Mushroom Heater**  
Stainless Steel  
87" Tall | 32" Round  
2244-01



**Pyramid Heater**  
Stainless Steel  
96" Tall | 18" (3 sides)  
2233-01



**Pyramid Heater**  
Hammered Bronze  
96" Tall | 18" (3 sides)  
2222-01



**Pyramid Heater**  
Matte Black  
96" Tall | 18" (3 sides)  
2255-01

*\*Comes with optional wheels for mobility*

## Warranty information

### Furniture Frame Warranty

Plantation Prestige Commercial Furniture extends a 3 year limited warranty for our frames to the original end use purchaser as a sign of our dedication to the highest possible quality standards. The warranty is non-transferable and is designed to cover the furniture under normal commercial use.

The extent of the warranty is to cover the material and/or workmanship of the furniture frame and welds. This warranty does not apply to umbrellas, cushions, alternative tops or fabrics.

### Alternative Tops, Cushions, Faux Wood Slats and Fabric Slings Warranty

Plantation Prestige Commercial Furniture extends a 1 year limited warranty to the original end use purchaser as a sign of our dedication to the highest possible quality standards. This warranty is non-transferable and is designed to cover the construction of the alternative tops, cushions, slats and slings under normal commercial use.

### Umbrella Warranty

Plantation Prestige Commercial Furniture extends a 3 year limited warranty to the original end use purchaser as a sign of our dedication to the highest possible quality standards for the Avalon, Edison, Geneva and Montego umbrella frame and frame finish. If the umbrella is a crank lift, then a 2 year warranty applies to the crank. Promenade umbrellas will have a 1 year warranty to the frame and frame finish. All umbrellas should use a Plantation Prestige Commercial Furniture authorized base. Failure to do so could result in voided warranty.

### \*\*\*Warranty Guidelines

All warranties become void if the furniture has been abused, inadequately maintained, or altered in any way. The warranty also becomes void in the event the furniture has been damaged by acts of nature, calamity and/or misuse. (for example, sunlight refraction on faux wood slats).

If the product is proven to be factory defective, as covered by the warranty, Plantation Prestige Commercial Furniture will repair or replace it at the factory's discretion. In the event the product has been discontinued, Plantation Prestige Commercial Furniture may replace the product with a similar item. All shipping, delivery and packaging costs are the sole responsibility of the owner of the furniture.

---

### To Place an Order

Please submit purchase orders through your local sales rep or contact Plantation Prestige directly for information regarding placing an order. Purchase orders must include part numbers, frame finish, fabric choice, net purchase cost and freight. All freight costs must be applied to order if not being shipped "freight collect."

Plantation Prestige uses multiple shipping locations. Please ask your sales rep if specifics are needed. Full payment required for all orders prior to shipping, unless credit terms have been established. Custom orders may require a deposit and are noncancelable.

### To Make a Claim

To make a claim under this warranty, please contact Plantation Prestige Commercial Furniture. All claims for this service must be accompanied by a proof of purchase, photos of defective product and a detailed description of the defect. All Custom Orders are considered final, and deemed not refundable; however, warranty claims may be submitted following the same guidelines as stated herein.

#### Custom Orders

The term "Custom Orders" applies to all items not stocked on a regular basis by Plantation Prestige Commercial Furniture. Items that are special ordered are namely cushions, slings, acrylic tops, and umbrellas due to the use of fabric not carried in-house, as well as any alteration or logo applied to the umbrella. Custom Order items require a 50% non-refundable deposit; however, claims for defect may be made to our claims department following our standard guidelines.

#### Freight Claims:

For products shipped 3rd party by Plantation Prestige, all freight claims must include correct paperwork from delivery. All claims must be filed within 48 hours so please inspect product upon arrival.

## Plantation Prestige Commercial Furniture

800 Corporate Parkway, Suite 108  
Birmingham, AL 35242  
205.593.4978  
custserv@plantationprestige.com

visit us at [www.plantationprestige.com](http://www.plantationprestige.com)



